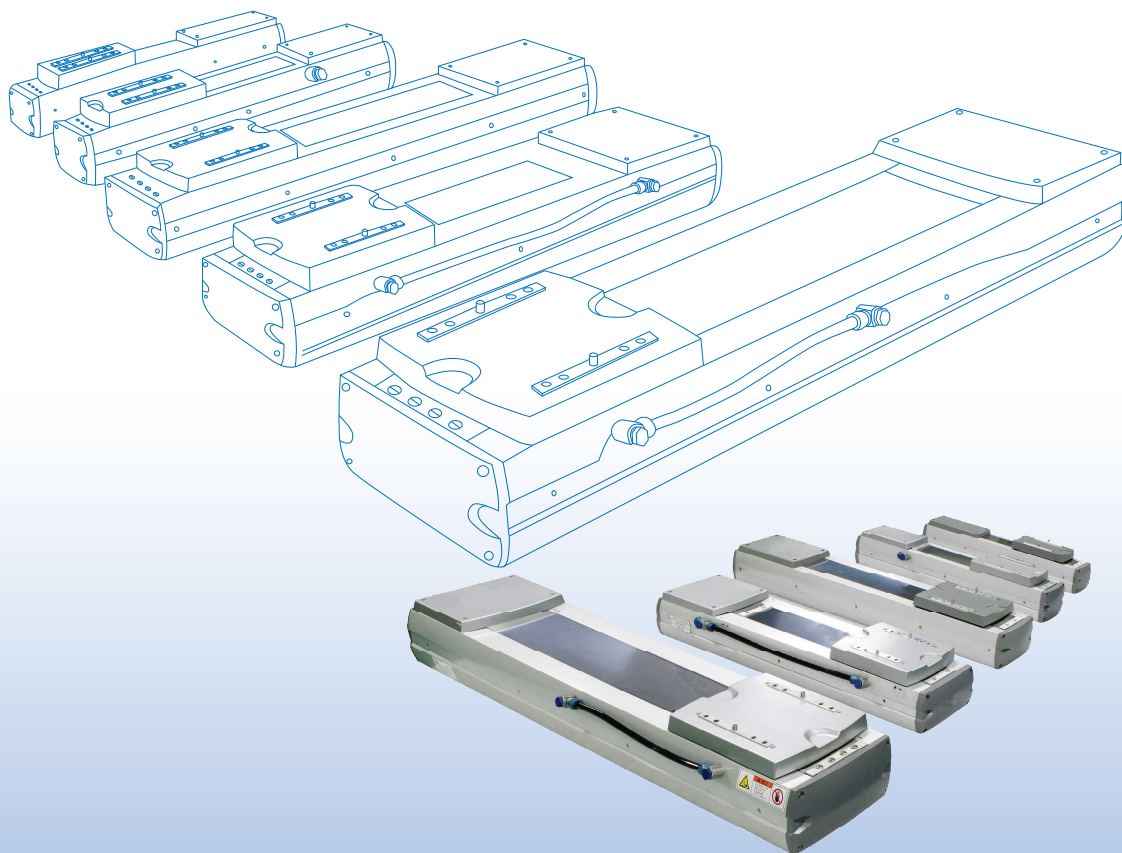


# CLEAN ROOM ROBOT / DRMC series



## Contents

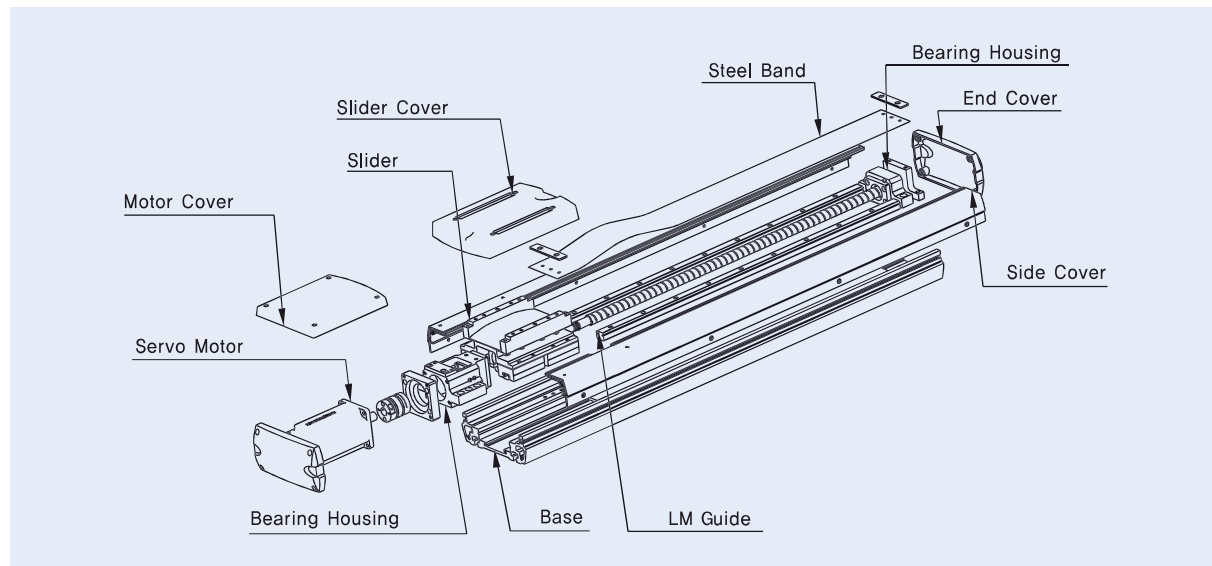
Feature	58 _ 60
Ordering Model	61
Model List	62
Specification Table	63 _ 64
Ball screw type	65 _ 75
DRMC(P) 70-S ~ DRMC(P)265-S	
DRMC(P) 70-P ~ DRMC(P)180-P	
Belt type	76 _ 79
DRMC 88-B ~ DRMC 140-B	

## Feature

### 1. Structure

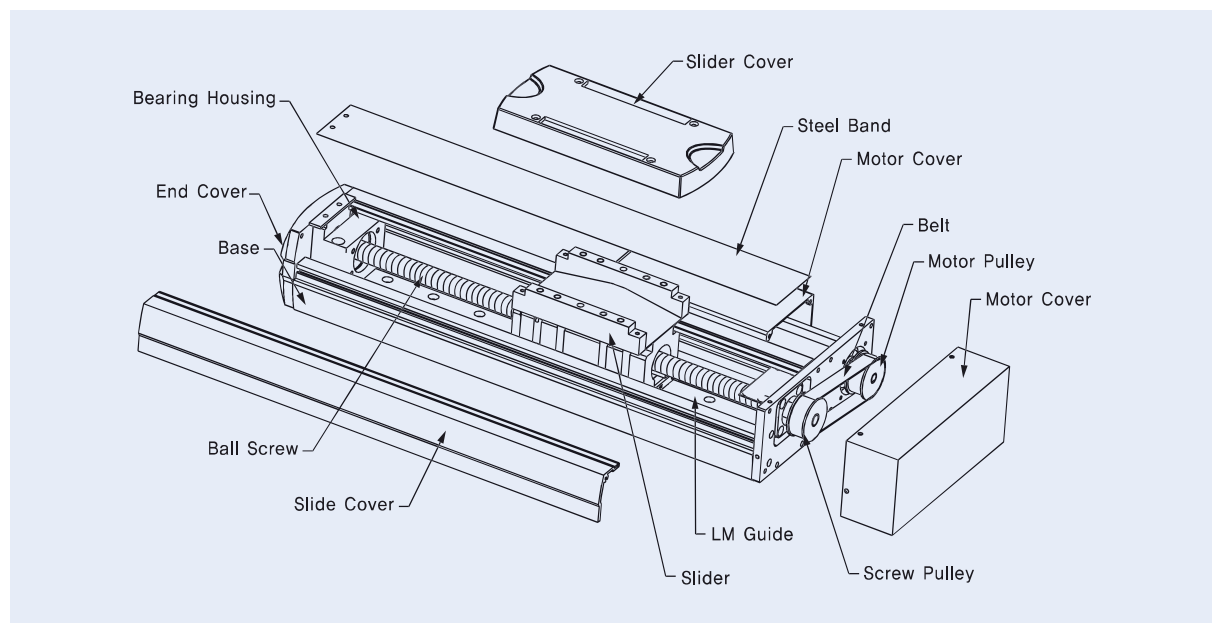
#### DRMC(P)-S : Ballscrew Driving Type

##### Straight type



\* The above drawings are for the ball screw types

##### Parallel type



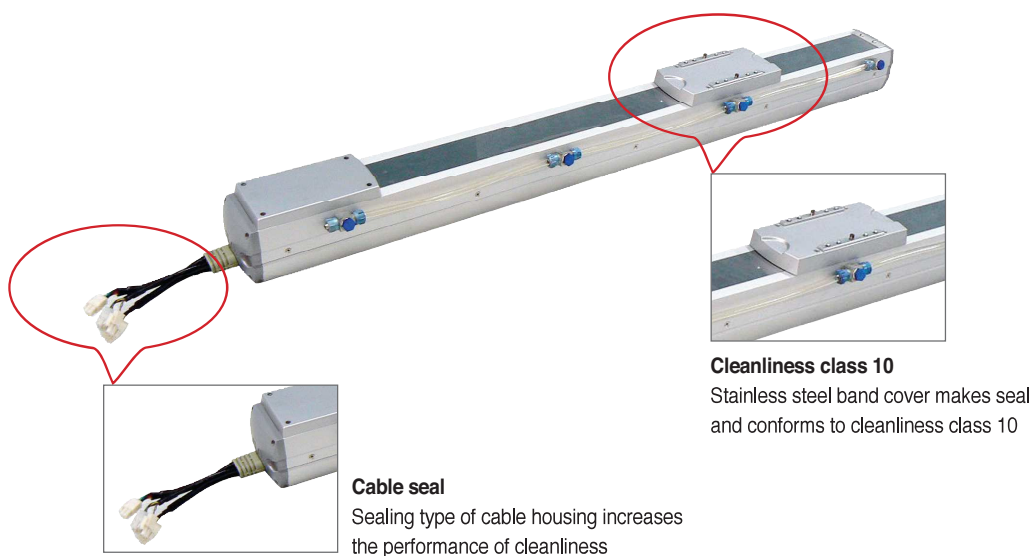
## 2. Various Product Line-up

DRMC series have successfully proved their reliability for corresponding to very high clean class 10 and higher precision and high load capacity. There are a wide range of models which can apply for various applications.

- ▶ Driving Type : Ball screw, Belt Driving Type
- ▶ Applied Motor : 80~1500W
- ▶ Stroke : 100~12,000 mm
- ▶ Speed : 250~2000 mm/s
- ▶ Payload : 120 kg(Horizontal) / 45 kg(Vertical)

*\* Nonstandard specification is subject to be discussed in advance.*



## 3. Feature



- 1) Particle Restriction - Internal particle is minimized because steel cover seals up the gap between slider and base and components is processed by aftertreatment.
- 2) Suction - Higher clean class is maintained because suction valve pulls out internal particle by force.

## 4. Controller

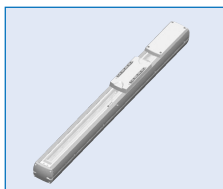
Single axis controller and Multi axes Controller are applicable.

Controller	Model	Type	Number of controlled axes	Page
	iMS-J	Single axis Controller	1 axis	151
	iM-Z	Multi axes Controller	2~8 axes	157

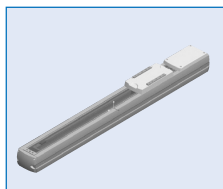
## Ballscrew Type

### DRMC(P)70~265-S(Straight)

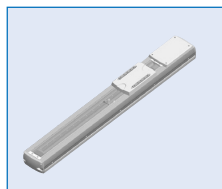
■ DRMC70-S



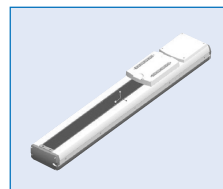
■ DRMC88-S



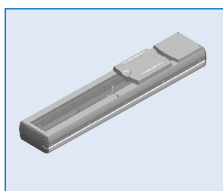
■ DRMC120-S



■ DRMC140-S



■ DRMC180-S

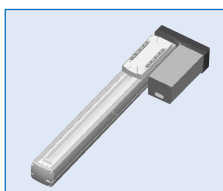


■ DRMC265-S

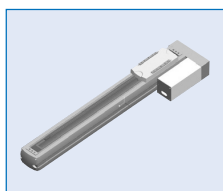


### DRMC(P)70~180-P(Parallel)

■ DRMC70-P



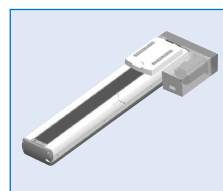
■ DRMC88-P



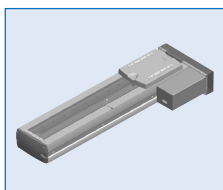
■ DRMC120-P



■ DRMC140-P

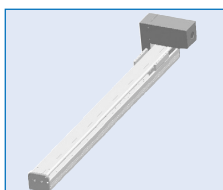


■ DRMC180-P

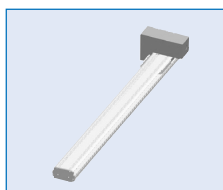


## Belt Type

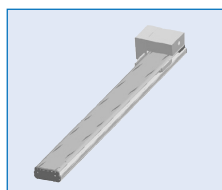
■ DRMC88-B



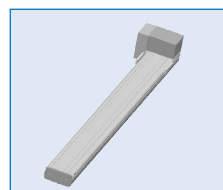
■ DRMC100-B



■ DRMC120-B



■ DRMC140-B



## Ordering Model

①	②	③	④	⑤	⑥	⑦	⑧
Series	Base width	Type	Motor	Encoder	Speed	Stroke	Option
DRMC	88	- S	- 80	- I	- L10	- 300	- L1

### ① Series

#### Name of the series : DRMC is Clean room robots

DRMC : Cartesian robot, Clean room specifications

DRMCP : Cartesian robot, Clean room specifications, High precision

DRMD : Cartesian robot, Dust proof specifications

DRMDP : Cartesian robot, Dust proof specifications, High precision

### ② Base width

#### The base width of each model

(Ex : 88=88mm)

### ③ Type

#### The type of actuator or drive

S : Ball screw, Straight type (Motor in-line type)

LP : Ball screw, Left side parallel type (Motor side mount-Left)

RP : Ball screw, Right side parallel type (Motor side mount-Right)

BP : Ball screw, Bottom side parallel type (Motor side mount-Bottom)

B : Belt drive

G : Guide(Slave)-axis

\* Guide-axis model includes series, base width, type, and stroke in the ordering model  
(Ex: DRMC70-G-400)

### ④ Motor

#### Motor capacity(W)

(Ex : 80=80W)

### ⑤ Encoder

#### A : Absolute Encoder

The current slider position will be retained even after the power is turned off, so origin return is not required when the power is turned on.

#### I : Incremental Encoder

The slider position data will be cleared once the power is turned off, so origin return is required whenever the power is turned on.

### ⑥ Speed

#### The speed of ball screw types indicate the ball screw lead and the belt types indicate speed(unit: mm/s)

(Ex : L10=Lead 10mm)

\* The speed is based on the rated 3000rpm(revolution per minute) of standard servo motor

### ⑦ Stroke

#### Stroke

(Ex : 300=300mm)

### ⑧ Option

#### The Options to be equipped on the robot

L0 : None sensor

L1 : Magnetic Limit sensor (Motor side & Reverse side)

L2 : L1 + Origin sensor(Motor side)

L3 : Photo Limit sensor(Motor side & Reverse side+Origin sensor)

K : K1 seal grease for the LM guide

R : Retainer seal grease for the LM guide

B : Brake motor

RS : Suction dust joint on opposition side

## Model List

### Ball screw type

Series	Base width	-	Type	-	Motor	-	Encoder	-	Speed	-	Stroke	-	Option
DRMC DRMCP	70	-	S LP RP BP	-	80	-	I A	-	L10	-	100 ~ 400	-	L1 L2 L3 K R B RS
	88	-		-		-		-	L05	-	100 ~ 1100	-	
		-		-		-		-	L10	-		-	
		-		-		-		-	L20	-		-	
	120	-		-	200	-		-	L05	-	100 ~ 1100	-	
	140	-		-		-		-	L10	-		-	
		-		-		-		-	L20	-	100 ~ 1100	-	
	180	-		-		-		-	L05	-		-	
		-		-		-		-	L10	-		-	
		-		-		-		-	L20	-		-	
		-		-		-		-	L05	-	100 ~ 1500	-	
	265	-		-	400	-		-	L10	-		-	
		-		-	600	-		-	L20	-		-	
DRMC	265	-	S	-	2000	-	I A	-	L10	-	100~2500	-	K R B RS
		-		-	2500	-		-	L20	-		-	
		-		-	3000	-		-	L40	-		-	

\* DRMC 265 is only for Straight type(Motor in-line type)

### Belt type

Series	Base width	-	Type	-	Motor	-	Encoder	-	Speed	-	Stroke	-	Option
DRMC	88	-	B	-	400	-	I A	-	800	-	1000 ~ 3000	-	L1 L2 L3 K R RS
	100	-		-	400	-		-	1000	-	1000 ~ 5000	-	
		-		-	800	-		-	2000	-		-	
	120	-		-	800	-		-	1000	-	1000 ~ 5000	-	
	140	-		-	800	-		-	1200	-	1000 ~ 2000	-	

DRM series

DRMC series

DLM series

DTR series

DSM series

IMS-J series

IM-S series

ACCESSORIES

RV series

## Specification Table

### Ball screw type


Ball screw type	Stroke(mm), maximum speed(mm/s)																								
Model	100	200	300	400	500	600	700	800	900	1000	1100	1200	1300	1400	1500	1600	1700	1800	1900	2000	2100	2200	2300	2400	2500
DRMC(P)70-S	500																								
DRMC(P)88-S	250																								
	500						490	380	310	250	210														
	1000						980	770	620	510	430														
DRMC(P)120-S	250																								
	500						490	380	310	250	210														
	1000						980	770	620	510	430														
DRMC(P)140-S	250																								
	500						490	390	310	260	210														
	1000						990	780	630	520	430														
DRMC(P)180-S	250																								
	500						470	370	300	250	210	255	220	191	168										
	1000						950	750	610	500	420	509	439	383	337										
	500						470	370	300	250	210	255	220	191	168										
	1000						950	750	610	500	420	509	439	383	337										
DRMC265-S	330														312	279	252	228	207	189	173	159	147	136	126
	600														625	559	503	455	414	378	346	319	294	272	253
	1320														1249	1118	1006	910	828	756	693	637	588	545	506
DRMC(P)70-P	500																								
DRMC(P)88-P	250																								
	500						490	380	310	250	210														
	1000						980	770	620	510	430														
DRMC(P)120-P	250																								
	500						490	380	310	250	210														
	1000						990	780	630	520	430														
DRMC(P)140-P	250																								
	500						490	390	310	260	210														
	1000						990	780	630	520	430														
DRMC(P)180-P	250																								
	500						470	370	300	250	210	225	220	191	168										
	1000						950	750	610	500	420	509	439	383	337										
	500						470	370	300	250	210	255	220	191	168										
	1000						950	750	610	500	420	509	439	383	337										

### Ball screw type

Belt type	Stroke(mm), maximum speed(mm/s)														
Model	1200	1400	1600	1800	2000	2200	2400	2600	2800	3000	3200	3400	3600	3800	4000
DRMC88-B	800														
DRMC100-B	1000														
DRMC120-B	2000														
DRMC140-B	1000														
	1200														

	Lead (mm)	Rated speed (mm/s)	Motor (W)	Payload at rated acceleration (kg)		Payload by acceleration(kg)							
						0.3G	0.4G	0.5G	0.6G	0.7G	0.8G	0.9G	1.0G
	10	500	80	Horizontal	10	10	10	10	-	-	-	-	-
				Vertical	7	7	7	7	-	-	-	-	-
	5	1000	80	Horizontal	20	20	20	14	-	-	-	-	-
				Vertical	9	9	3	-	-	-	-	-	-
	10	250	80	Horizontal	20	20	20	14	-	-	-	-	-
				Vertical	7	7	6	5	-	-	-	-	-
	20	500	80	Horizontal	7	7	7	7	7	5	4	3	3
				Vertical	3	3	2.5	2.5	2	1.5	1.5	1	0.8
	5	250	200	Horizontal	80	80	80	80	-	-	-	-	-
				Vertical	35	35	34	30	-	-	-	-	-
	10	500	200	Horizontal	60	60	60	55	-	-	-	-	-
				Vertical	20	20	219	18	-	-	-	-	-
	20	1000	200	Horizontal	30	30	30	25	21	18	15	13	11
				Vertical	8	8	7.5	7	6.5	6	6	5.5	5
	5	250	200	Horizontal	80	80	80	80	-	-	-	-	-
				Vertical	35	35	35	30	-	-	-	-	-
	10	500	200	Horizontal	60	60	60	55	-	-	-	-	-
				Vertical	20	20	19	18	-	-	-	-	-
	20	1000	200	Horizontal	30	30	30	26	21	18	15	13	11
				Vertical	8	8	7.5	7	6.5	6	6	5.5	5
	5	250	400	Horizontal	120	120	120	120	-	-	-	-	-
				Vertical	45	45	45	45	-	-	-	-	-
	10	500	400	Horizontal	100	100	100	100	-	-	-	-	-
				Vertical	35	35	35	35	-	-	-	-	-
	20	1000	400	Horizontal	60	60	60	55	45	38	33	29	26
				Vertical	15	15	15	15	14	13	13	12	11
	10	500	600	Horizontal	120	120	120	120	-	-	-	-	-
				Vertical	40	40	40	40	-	-	-	-	-
	20	1000	600	Horizontal	100	100	100	84	70	59	51	45	41
				Vertical	20	20	20	20	20	20	20	19	18
	10	330	2000	Horizontal	300	300	300	300	-	-	-	-	-
				Vertical	150	150	150	150	-	-	-	-	-
	20	660	2500	Horizontal	240	240	240	240	240	240	240	240	240
				Vertical	100	100	100	100	100	100	100	100	100
	40	1320	3000	Horizontal	150	150	150	150	150	150	150	150	150
				Vertical	80	80	80	80	80	80	80	80	80
	10	500	80	Horizontal	10	10	10	10	-	-	-	-	-
				Vertical	7	7	7	7	-	-	-	-	-
	5	250	80	Horizontal	20	20	20	5	-	-	-	-	-
				Vertical	9	9	-	-	-	-	-	-	-
	10	500	80	Horizontal	20	20	19	12	-	-	-	-	-
				Vertical	7	7	5	4	-	-	-	-	-
	20	1000	80	Horizontal	7	7	7	7	6	5	4	3	2
				Vertical	3	3	2.5	2	2	1.5	1	0.7	0.3
	5	250	200	Horizontal	80	80	80	80	-	-	-	-	-
				Vertical	35	35	32	26	-	-	-	-	-
	10	500	200	Horizontal	60	60	60	52	-	-	-	-	-
				Vertical	20	20	19	17	-	-	-	-	-
	20	1000	200	Horizontal	30	30	30	25	20	17	14	12	10
				Vertical	8	8	7.5	7	6.5	6	5.5	5	4.5
	5	250	200	Horizontal	80	80	80	80	-	-	-	-	-
				Vertical	35	35	32	26	-	-	-	-	-
	10	500	200	Horizontal	60	60	60	52	-	-	-	-	-
				Vertical	20	20	19	17	-	-	-	-	-
	20	1000	200	Horizontal	30	30	30	25	20	17	14	12	10
				Vertical	8	8	7.5	7	6.5	6	5.5	5.0	4.5
	5	250	400	Horizontal	120	120	120	120	-	-	-	-	-
				Vertical	45	45	45	45	-	-	-	-	-
	10	500	400	Horizontal	100	100	100	100	-	-	-	-	-
				Vertical	35	35	35	35	-	-	-	-	-
	20	1000	400	Horizontal	60	60	60	54	45	38	33	28	25
				Vertical	15	15	15	15	14	13	12	12	11
	10	500	600	Horizontal	120	120	120	120	-	-	-	-	-
				Vertical	40	40	40	40	-	-	-	-	-
	20	1000	600	Horizontal	100	100	100	83	69	59	51	45	40
				Vertical	20	20	20	20	20	20	19	18	17

	Lead (mm)	Rated speed (mm/s)	Motor (W)	Payload at rated acceleration (kg)		Payload by acceleration(kg)							
						0.3G	0.4G	0.5G	0.6G	0.7G	0.8G	0.9G	1.0G
	800	800	400	Horizontal	20	20	-	-	-	-	-	-	-
	1000	1000	400	Horizontal	35	35	-	-	-	-	-	-	-
	2000	2000	800	Horizontal	35	35	-	-	-	-	-	-	-
	1000	1000	800	Horizontal	40	40	-	-	-	-	-	-	-
	1200	1200	800	Horizontal	30	30	-	-	-	-	-	-	-

<b>DRMC70-S</b>	Ball screw, Clean Room specifications, Base width 70mm, In-Line type, 80W, 1~500mm/s, Clean class 10							
<b>DRMCP70-S</b>	Ball screw, Clean Room specifications, Base width 70mm, In-Line type, 80W, 1~500mm/s, Clean class 10, High precision							
Type : In-Line		Stroke : 100~400mm		Payload : 10kg(Horizontal), 7kg(Vertical)				
Series	Base width	Type	Motor	Encoder	Speed	Stroke	Option	
<b>DRMC</b>	<b>70</b>	<b>- S</b>	<b>- 80</b>	<b>- I</b>	<b>- L10</b>	<b>- 400</b>	<b>- L1</b>	

#### Basic specifications

Model	Motor(W)	Encoder	Speed		Stroke(mm)	Payload(Maximum)		Air flow rate (N l /min)
			Lead(mm)	Speed(mm/s)		Horizontal(kg)	Vertical(kg)	
DRMC70-S DRMCP70-S	80	I A	L10	500	100~400	10	7	15

#### Options

Code	Description
L0	None sensor
L1	Limit sensor
L2	Origin sensor
L3	Photo sensor
K	K1 seal
R	Retainer seal
B	Brake
RS	Suction duct joint on opposition side

※ According to options the price is changeable.

#### Allowable dynamic moment

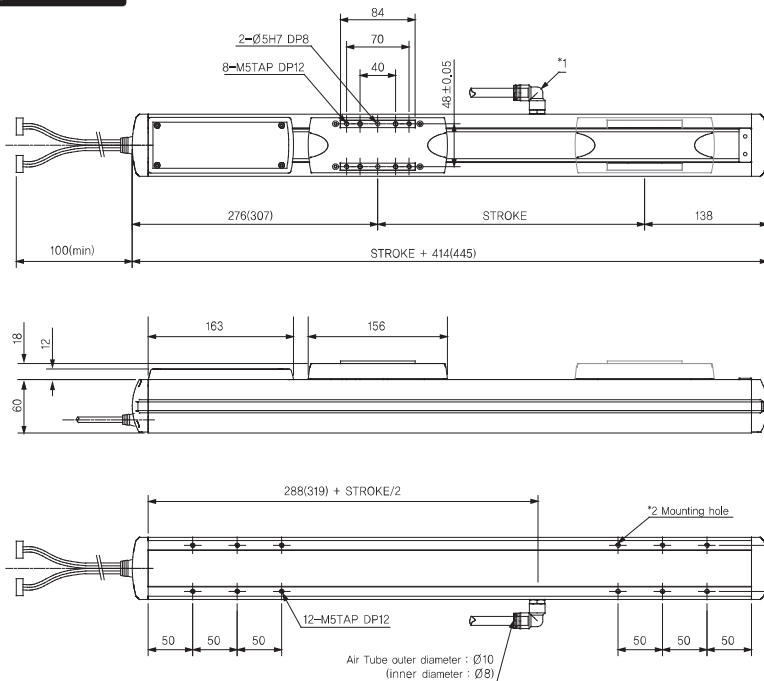
Direction	Moment(N.m)		
Ma	X	7	Mp
	Y	5	Mr
Mb	X	21	My
	Z	9	Mr
Mc	Y	23	My
	Z	22	Mp

#### Common specifications

※ DRMP specifications are shown in [ ]

Positioning Repeatability	+/-0.02mm[+/-0.005mm]
Drive type	Ball screw, Φ12(Lead10mm)
Base material	Aluminum with Electro-deposition plating treatment
Cleanliness class(Note1)	Class 10
Cables length(Note2)	5m(standard), 7m, 10m(option)

#### Dimension



\*1 Standard position of suction dust joint is on the left side at the motor cable view position. Opposition side is available

\*2 Mounting holes positions under base are available to adjust

#### Dimensions, Weight, Maximum Speed

	Stroke(mm)	100	200	300	400
	Weight(kg)(Note3)	3.5	4.0	4.5	5.0
Maximum Speed(mm/s)	L10	500	500	500	500

※ The above speed is based on the acceleration of 0.3G

#### Applicable controllers

Controller	Maximum number of controlled axes	Page
iM-Σ	8 axes	157
iMS-J	1 axis	151

#### Note

- (1) Per 1 cfm(0.1um based)
- (2) Maximum length is 30m. The performance of longer length than 15m is affected by the installation environment.
- (3) This is the weight of the model without brake motor  
The model equipped with a brake motor is 0.5kg heavier than this value

<b>DRMC88-S</b>	Ball screw, Clean Room specifications, Base width 88mm, In-Line type, 80W, 1~1000mm/s, Clean class 10						
<b>DRMCP88-S</b>	Ball screw, Clean Room specifications, Base width 88mm, In-Line type, 80W, 1~1000mm/s, Clean class 10, High precision						
Type : In-Line		Stroke : 100~1100mm		Payload : 20kg(Horizontal), 9kg(Vertical)			
Series	Base width	Type	Motor	Encoder	Speed	Stroke	Option
<b>DRMC</b>	<b>88</b>	<b>- S</b>	<b>- 80</b>	<b>- I</b>	<b>- L20</b>	<b>- 1100</b>	<b>- L1</b>



#### Basic specifications

Model	Motor(W)	Encoder	Speed		Stroke(mm)	Payload(Maximum)		Air flow rate (N l /min)
			Lead(mm)	Speed(mm/s)		Horizontal(kg)	Vertical(kg)	
DRMC88-S	80	I A	L05	250	100~1100	20	9	20
DRMCP88-S			L10	500		20	7	20
			L20	1000		7	3	40

#### Options

Code	Description
L0	None sensor
L1	Limit sensor
L2	Origin sensor
L3	Photo sensor
K	K1 seal
R	Retainer seal
B	Brake
RS	Suction duct joint on opposition side

\* According to options the price is changeable.

#### Allowable dynamic moment

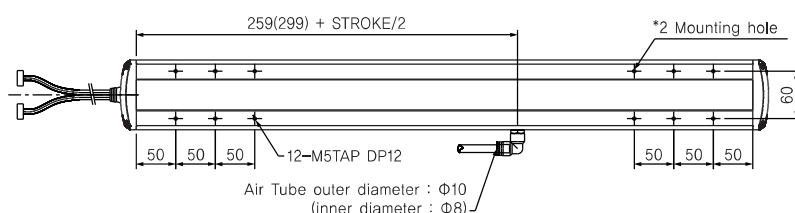
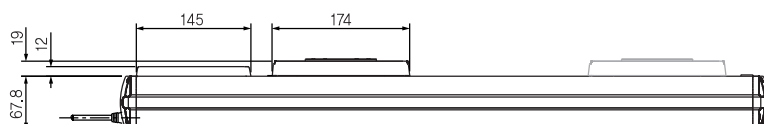
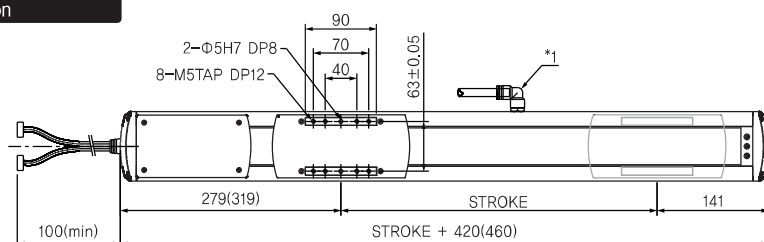
Direction	Moment(N.m)		
Ma	X	12	Mp
	Y	15	Mr
Mb	X	36	My
	Z	29	Mr
Mc	Y	49	My
	Z	38	Mp

#### Common specifications

\* DRMP specifications are shown in [ ]

Positioning Repeatability	+/-0.02mm[+/-0.005mm]
Drive type	Ball screw, Φ15(Lead 5, 10, 20mm)
Base material	Aluminum with Electro-deposition plating treatment
Cleanliness class(Note1)	Class 10
Cables length(Note2)	5m(standard), 7m, 10m(option)

#### Dimension



\*1 Standard position of suction dust joint is on the left side at the motor cable view position. Opposition side is available

\*2 Mounting holes positions under base are available to adjust

#### Dimensions, Weight, Maximum Speed

	Stroke(mm)	100	200	300	400	500	600	700	800	900	1000	1100
	Weight(kg)(Note3)	5.2	5.9	6.6	7.3	8	8.7	9.4	10.1	10.8	11.5	12.2
	Maximum Speed(mm/s)	250						-	-	-	-	-
		500						490	380	310	250	210
		1000						980	770	620	510	430

\* The above speed is based on the acceleration of 0.3G


#### Applicable controllers

Controller	Maximum number of controlled axes	Page
iM-Σ	8 axes	157
iMS-J	1 axis	151

#### Note

- (1) Per 1 cfm(0.1um based)
- (2) Maximum length is 30m. The performance of longer length than 15m is affected by the installation environment.
- (3) This is the weight of the model without brake motor  
The model equipped with a brake motor is 0.5kg heavier than this value

<b>DRMC120-S</b>		Ball screw, Clean Room specifications, Base width 120mm, In-Line type, 200W, 1~1000mm/s, Clean class 10					
<b>DRMCP120-S</b>		Ball screw, Clean Room specifications, Base width 120mm, In-Line type, 200W, 1~1000mm/s, Clean class 10, High precision					
Type : In-Line		Stroke : 100~1100mm		Payload : 80kg(Horizontal), 35kg(Vertical)			
Series	Base width	Type	Motor	Encoder	Speed	Stroke	Option
DRMC	120	- S	- 200	- I	- L20	- 1100	- L1



#### Basic specifications

Model	Motor(W)	Encoder	Speed		Stroke(mm)	Payload(Maximum)		Air flow rate (N ℓ /min)
			Lead(mm)	Speed(mm/s)		Horizontal(kg)	Vertical(kg)	
DRMC120-S	200	I A	L05	250	100~1100	80	35	30
DRMCP120-S			L10	500		60	20	30
			L20	1000		30	8	60

#### Options

Code	Description
L0	None sensor
L1	Limit sensor
L2	Origin sensor
L3	Photo sensor
K	K1 seal
R	Retainer seal
B	Brake
RS	Suction duct joint on opposition side

\* According to options the price is changeable.

#### Allowable dynamic moment

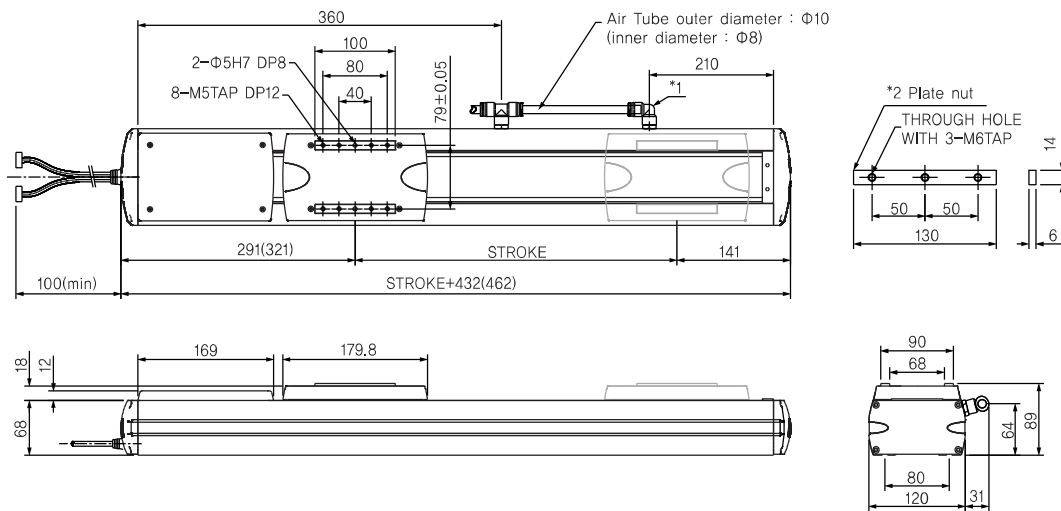
Direction	Moment(N.m)		
Ma	x	60	Mp
	y	60	Mr
Mb	x	49	My
	z	65	Mr
Mc	y	67	My
	z	85	Mp

#### Common specifications

\* DRMP specifications are shown in [ ]

Positioning Repeatability	+/-0.02mm[+/-0.005mm]
Drive type	Ball screw, Φ15(Lead5, 10, 20mm)
Base material	Aluminum with Electro-deposition plating treatment
Cleanliness class(Note1)	Class 10
Cables length(Note2)	5m(standard), 7m, 10m(option)

#### Dimension



\*1 Standard position of suction dust joint is on the left side at the motor cable view position. Opposition side is available

\*2 Mounting holes positions under base are available to adjust

#### Dimensions, Weight, Maximum Speed

	Stroke(mm)	100	200	300	400	500	600	700	800	900	1000	1100
	Weight(kg)(Note3)	6.4	7.1	7.8	8.5	9.2	9.9	10.6	11.3	12	12.7	13.4
Maximum Speed(mm/s)	L05	250						-	-	-	-	-
	L10	500						490	380	310	250	210
	L20	1000						980	770	620	510	430


\* The above speed is based on the acceleration of 0.3G

#### Applicable controllers

Controller	Maximum number of controlled axes	Page
iM-Σ	8 axes	157
iMS-J	1 axis	151

#### Note

- (1) Per 1 cfm(0.1um based)
- (2) Maximum length is 30m. The performance of longer length than 15m is affected by the installation environment.
- (3) This is the weight of the model without brake motor  
The model equipped with a brake motor is 0.5kg heavier than this value

<b>DRMC140-S</b>	Ball screw, Clean Room specifications, Base width 140mm, In-Line type, 200W, 1~1000mm/s, Clean class 10								
<b>DRMCP140-S</b>	Ball screw, Clean Room specifications, Base width 140mm, In-Line type, 200W, 1~1000mm/s, Clean class 10, High precision								
Type : In-Line		Stroke : 100~1100mm			Payload : 80kg(Horizontal), 35kg(Vertical)				
<b>Series</b>	<b>Base width</b>	<b>Type</b>	<b>Motor</b>	<b>Encoder</b>	<b>Speed</b>	<b>Stroke</b>	<b>Option</b>		
<b>DRMC</b>	<b>140</b>	<b>- S</b>	<b>- 200</b>	<b>- I</b>	<b>- L20</b>	<b>- 1100</b>	<b>- L1</b>		

#### Basic specifications

Model	Motor(W)	Encoder	Speed		Stroke(mm)	Payload(Maximum)		Air flow rate (N l /min)
			Lead(mm)	Speed(mm/s)		Horizontal(kg)	Vertical(kg)	
DRMC140-S	200	I A	L05	250	100~1100	80	35	40
DRMCP140-S			L10	500		60	20	40
			L20	1000		30	8	70

#### Options

Code	Description
L0	None sensor
L1	Limit sensor
L2	Origin sensor
L3	Photo sensor
K	K1 seal
R	Retainer seal
B	Brake
RS	Suction duct joint on opposition side

\* According to options the price is changeable.

#### Allowable dynamic moment

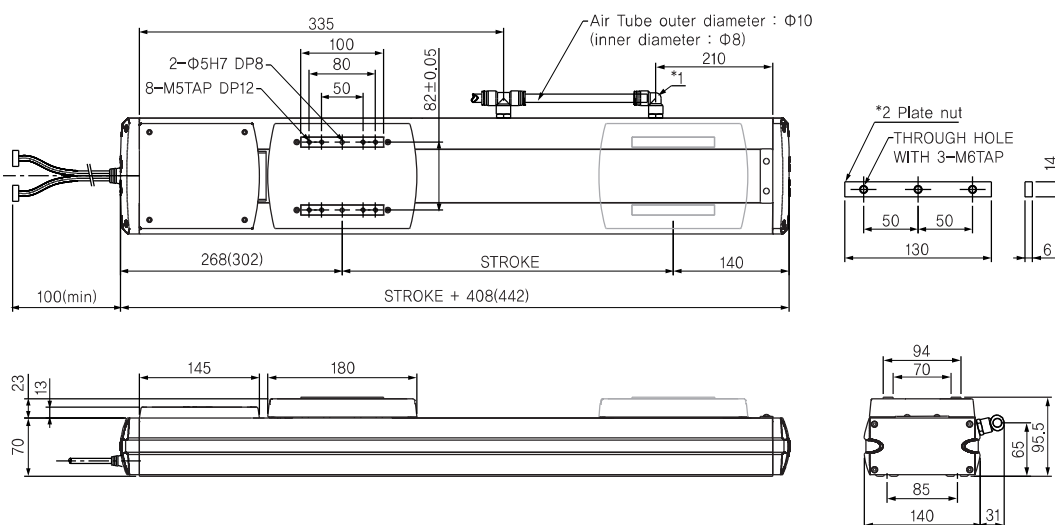
Direction	Moment(N.m)		
Ma	x	100	Mp
	y	136	Mr
Mb	x	112	My
	z	143	Mr
Mc	y	101	My
	z	122	Mp

#### Common specifications

\* DRMP specifications are shown in [ ]

Positioning Repeatability	+/-0.02mm[+/-0.005mm]
Drive type	Ball screw, $\Phi 15$ (Lead5, 10, 20mm)
Base material	Aluminum with Electro-deposition plating treatment
Cleanliness class(Note1)	Class 10
Cables length(Note2)	5m(standard), 7m, 10m(option)

#### Dimension



\*1 Standard position of suction dust joint is on the left side at the motor cable view position. Opposition side is available

\*2 Mounting holes positions under base are available to adjust

#### Dimensions, Weight, Maximum Speed

	Stroke(mm)	100	200	300	400	500	600	700	800	900	1000	1100
	Weight(kg)(Note3)	8	9	10	11	12	13	14	15	16	17	18
Maximum Speed(mm/s)	L05	250						-	-	-	-	-
	L10	500						490	390	310	260	210
	L20	1000						990	780	630	520	430

\* The above speed is based on the acceleration of 0.3G

#### Applicable controllers

Controller	Maximum number of controlled axes	Page
iM-Σ	8 axes	157
iMS-J	1 axis	151

#### Note

- (1) Per 1 cfm(0.1um based)
- (2) Maximum length is 30m. The performance of longer length than 15m is affected by the installation environment.
- (3) This is the weight of the model without brake motor  
The model equipped with a brake motor is 0.5kg heavier than this value

## DRMC180-S

Ball screw, Clean Room specifications, Base width 180mm, In-Line type, 400W/600W, 1~1000mm/s, Clean class 10

## DRMCP180-S

Ball screw, Clean Room specifications, Base width 180mm, In-Line type, 400W/600W, 1~1000mm/s, Clean class 10, High precision

Type : In-Line Stroke : 100~1500mm Payload : 120kg(Horizontal), 45kg(Vertical) / 120kg(Horizontal), 40kg(Vertical)

Series Base width Type Motor Encoder Speed Stroke Option  
**DRMC 180 - S - 600 - I - L20 - 1500 - L1**



### Basic specifications

Model	Motor(W)	Encoder	Speed		Stroke(mm)	Payload(Maximum)		Air flow rate (N ℓ /min)
			Lead(mm)	Speed(mm/s)		Horizontal(kg)	Vertical(kg)	
DRMC180-S DRMCP180-S	400	I A	L05	250	100~600	120	45	70
			L10	500	100~1500	100	35	70
			L20	1000		60	15	140
	600		L10	500		120	40	70
			L20	1000		100	20	140

### Options

Code	Description
L0	None sensor
L1	Limit sensor
L2	Origin sensor
L3	Photo sensor
K	K1 seal
R	Retainer seal
B	Brake
RS	Suction duct joint on opposition side

\* According to options the price is changeable.

### Allowable dynamic moment

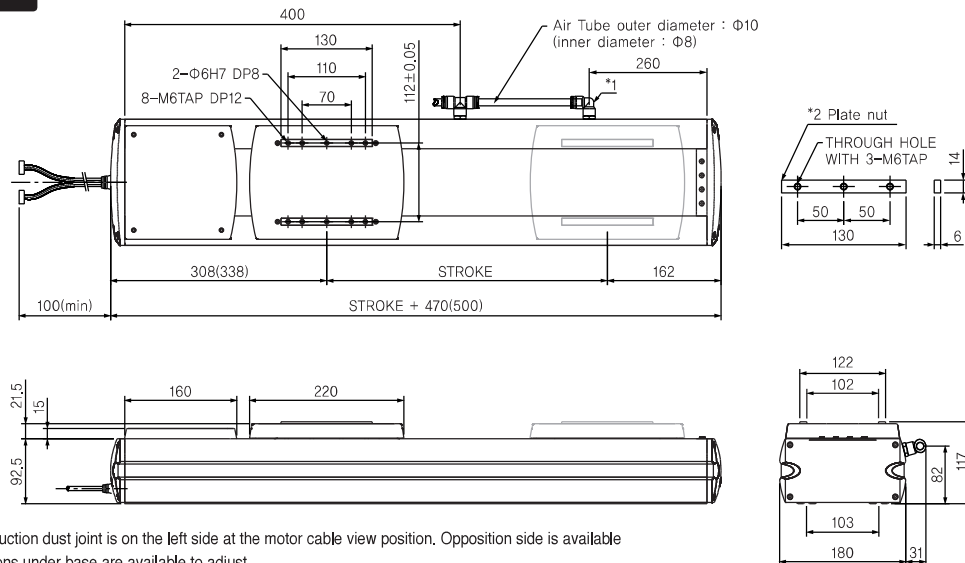
Direction	Moment(N.m)
Ma	X 165 Mp
	Y 232 Mr
Mb	X 190 My
	Z 246 Mr
Mc	Y 174 My
	Z 209 Mp

### Common specifications

\* DRMP specifications are shown in [ ]

Positioning Repeatability	+/-0.02mm[+/-0.005mm]
Drive type	Ball screw, Φ15(Lead5,10,20mm), Φ20(Lead10, 20mm)
Base material	Aluminum with Electro-deposition plating treatment
Cleanliness class(Note1)	Class 10
Cables length(Note2)	5m(standard), 7m, 10m(option)

### Dimension



\*1 Standard position of suction dust joint is on the left side at the motor cable view position. Opposition side is available

\*2 Mounting holes positions under base are available to adjust

### Dimensions, Weight, Maximum Speed

	Stroke(mm)	100	200	300	400	500	600	700	800	900	1000	1100	1200	1300	1400	1500
	Weight(kg)(Note3)	13.9	15.5	17.1	18.7	20.3	21.9	23.5	25.1	26.7	28.3	29.9	31.5	33.1	34.7	36.3
Maximum Speed(mm/s)	L05				250			-	-	-	-	-	-	-	-	-
	L10				500			470	370	300	250	210	255	220	191	168
	L20				1000			950	750	610	500	420	509	439	383	337

\* The above speed is based on the acceleration of 0.3G

### Applicable controllers

Controller	Maximum number of controlled axes	Page
iM-Σ	8 axes	157
iMS-J	1 axis	151

### Note

- (1) Per 1 cfm(0.1um based)
- (2) Maximum length is 30m. The performance of longer length than 15m is affected by the installation environment.
- (3) This is the weight of the model without brake motor  
The model equipped with a brake motor is 0.5kg heavier than this value
- (4) and (5) The stroke and lead of ball screw are related. The maximum stroke of the ball screw of Φ15, lead 10, 20mm is 1100mm and the ball screw of Φ20, lead 10, 20mm is 1500mm

# DRMC265-S

Ball screw, Clean room specifications, Base width 265mm, In-Line type, 2000W/2500W/3000W, 1-1320mm/s, Clean class10

Type : In-Line

Stroke : 100 ~ 2500mm

Payload : 350Kg(Horizontal), 150Kg(Vertical)

Series	Base width	Type	Motor	Encoder	Speed	Stroke	Option
DRMC	265	- S	- 2000	- I	- L10	- 2500	- L1



## Basic specifications

Model	Motor(W)	Encoder	Speed		Stroke(mm)	Payload(Maximum)		Air flow rate (N l /min)
			Lead(mm)	Speed(mm/s)		Horizontal(kg)	Vertical(kg)	
DRMC265-S	2000	I A	L10	330	100~2500	350	150	150
	2500		L20	660		240	100	150
	3000		L40	1320		90	80	250

## Options

Code	Description
L0	None sensor
L1	Limit sensor
L2	Origin sensor
L3	Photo sensor
K	K1 seal
R	Retainer seal
B	Brake
RS	Suction duct joint on opposition side

\* According to options the price is changeable.

## Allowable dynamic moment

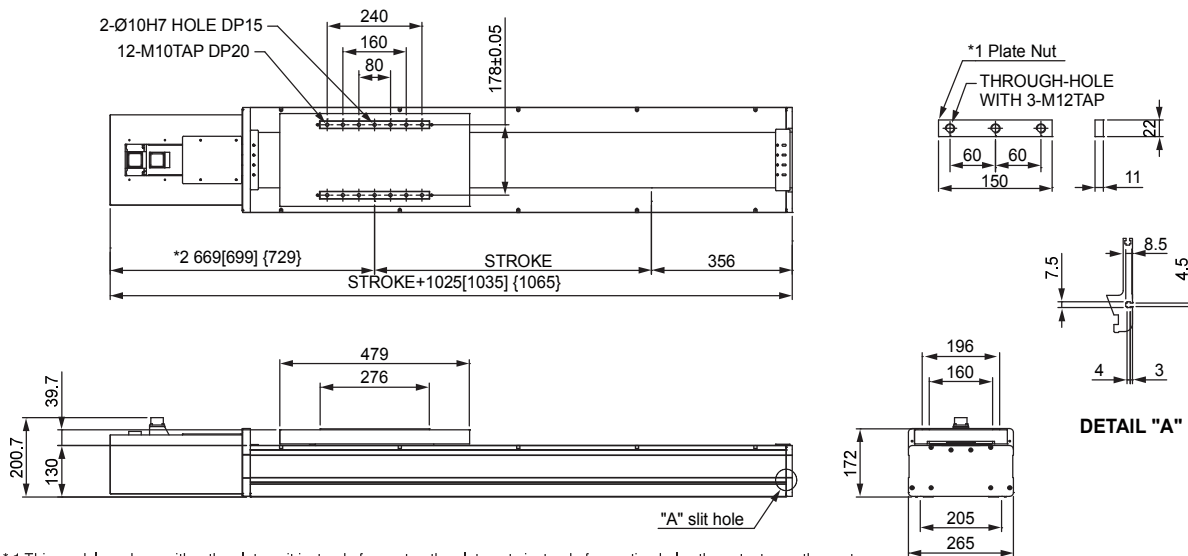
Direction	Moment(N.m)	
Ma	x	1082.7 Mp
	y	1097.4 Mr
Mb	x	908.1 My
	z	1129.9 Mr
Mc	y	1528.4 My
	z	1833.5 Mp

## Common specifications

\* DRMP specifications are shown in [ ]

Positioning Repeatability	+/-0.02mm[+/-0.005mm]
Drive type	Ball screw, Φ40(Lead10,20,40mm)
Base material	Aluminum with Electro-deposition plating treatment
Cleanliness class(Note1)	Class 10
Cables length(Note2)	5m(standard), 7m, 10m(option)

## Dimension



\* 1 This model can have either the plate unit instead of mount or the plate nuts instead of mounting holes the actuator on the system

\* 2 Please refer to the dimensions according to adopted motor capacity

① 2Kw : No marks, ② 2.5Kw : [ ], ③ 3Kw : { }

## Dimensions, Weight, Maximum Speed

	Stroke(mm)	100	200	300	400	500	600	700	800	900	1000	1100	1200	1300	1400	1500	1600	1700	1800	1900	2000	2100	2200	2300	2400	2500
	Weight(kg)(Note3)	78	82.3	86.6	90.9	95.2	99.5	103.8	108.1	112.4	116.7	121	125	130	134	138	143	147	151	155	160	164	168	173	177	181
Maximum Speed (mm/s)	L10															312	279	252	228	207	189	173	159	147	136	126
	L20															625	559	503	455	414	378	346	319	294	272	253
	L40															1249	1118	1006	910	828	756	693	637	588	545	506

\* The above speed is based on the acceleration of 0.3G

## Applicable controllers

Controller	Maximum number of controlled axes	Page
iMS-J	1 axis	151

## Note

- (1) Per 1 cfm(0.1um based)
- (2) Maximum length is 30mm.  
The performance of longer length than 15m is affected by the installation environment.
- (3) This is the weight of the model without brake motor  
The model equipped with a brake motor is 0.5Kg heavier than this value

<b>DRMC70-P</b>		Ball screw, Clean Room specifications, Base width 70mm, Side mount type, 80W, 1~500mm/s, Clean class 10					
<b>DRMCP70-P</b>		Ball screw, Clean Room specifications, Base width 70mm, Side mount type, 80W, 1~500mm/s, Clean class 10, High precision					
Type : Side mount		Stroke : 100~400mm		Payload : 10kg(Horizontal), 7kg(Vertical)			
Series	Base width	Type	Motor	Encoder	Speed	Stroke	Option
DRMC	70	- LP -	80	- I -	L10	400	- L1

#### Basic specifications

Model	Motor(W)	Encoder	Speed		Stroke(mm)	Payload(Maximum)		Air flow rate (N ℓ /min)
			Lead(mm)	Speed(mm/s)		Horizontal(kg)	Vertical(kg)	
DRMC70-P DRMCP70-P	80	I A	L10	500	100~400	10	7	15

#### Options

Code	Description
L0	None sensor
L1	Limit sensor
L2	Origin sensor
L3	Photo sensor
K	K1 seal
R	Retainer seal
B	Brake
RS	Suction duct joint on opposition side

※ According to options the price is changeable.

#### Allowable dynamic moment

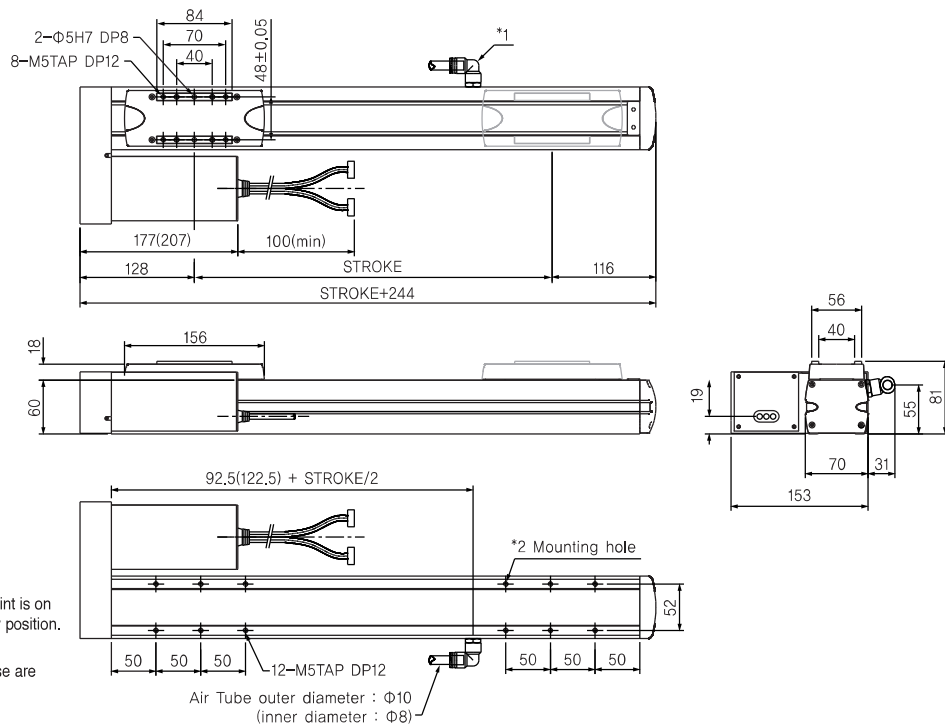
Direction	Moment(N.m)		
Ma	x	7	Mp
	y	5	Mr
Mb	x	21	My
	z	9	Mr
Mc	y	23	My
	z	22	Mp

#### Common specifications

※ DRMP specifications are shown in [ ]

Positioning Repeatability	+/-0.02mm[+/-0.005mm]
Drive type	Ball screw, Φ12(Lead10mm)
Base material	Aluminum with Electro-deposition plating treatment
Cleanliness class(Note1)	Class 10
Cables length(Note2)	5m(standard), 7m, 10m(option)

#### Dimension



\*1 Standard position of suction dust joint is on the left side at the motor cable view position. Opposition side is available

\*2 Mounting holes positions under base are available to adjust

#### Dimensions, Weight, Maximum Speed

	Stroke(mm)				
		100	200	300	400
	Weight(kg)(Note3)	3.5	4.0	4.5	5.0
Maximum Speed(mm/s)	L10	500	500	500	500

※ The above speed is based on the acceleration of 0.3G

#### Applicable controllers

Controller	Maximum number of controlled axes	Page
iM-Σ	8 axes	157
iMS-J	1 axis	151

#### Note

- (1) Per 1 cfm(0.1um based)
- (2) Maximum length is 30m. The performance of longer length than 15m is affected by the installation environment.
- (3) This is the weight of the model without brake motor  
The model equipped with a brake motor is 0.5kg heavier than this value

Model	Motor(W)	Encoder	Speed		Stroke(mm)	Payload(Maximum)		Air flow rate (N l /min)
			Lead(mm)	Speed(mm/s)		Horizontal(kg)	Vertical(kg)	
DRMC88-P	80	I A	L05	250	100~1100	20	9	20
DRMCP88-P			L10	500		20	7	20
			L20	1000		7	3	40

Positioning Repeatability	±0.02mm[±0.005mm]
Drive type	Ball screw, Φ12(Lead10mm)
Base material	Aluminum with Electro-deposition plating treatment
Cleanliness class(Note1)	Class 10
Cables length(Note2)	5m(standard). 7m. 10m(option)

Technical drawing of the front view of a car chassis. Dimensions are indicated in millimeters:

- Overall width: 73
- Inner width (between wheels): 53
- Overall height: 80.8
- Height from base to wheel center: 60
- Distance from base to chassis top: 19
- Distance from base to chassis bottom: 163
- Distance from chassis center to wheel center: 88.5
- Distance from chassis center to chassis bottom: 31

\* The above speed is based on the acceleration of 0.3G

Controller	Maximum number of controlled axes	Page
iM-Σ	8 axes	157
iMS-J	1 axis	151

- (1) Per 1 cfm(0.1um based)
- (2) Maximum length is 30m. The performance of longer length than 15m is affected by the installation environment.
- (3) This is the weight of the model without brake motor  
The model equipped with a brake motor is 0.5kg heavier than this value

<b>DRMC120-P</b>		Ball screw, Clean Room specifications, Base width 120mm, In-Line type, 200W, 1~1000mm/s, Clean class 10					
<b>DRMCP120-P</b>		Ball screw, Clean Room specifications, Base width 120mm, In-Line type, 200W, 1~1000mm/s, Clean class 10, High precision					
Type : Side mount		Stroke : 100~1100mm		Payload : 80kg(Horizontal), 35kg(Vertical)			
Series	Base width	Type	Motor	Encoder	Speed	Stroke	Option
DRMC	120	- LP -	200	- I -	L20	- 1100 -	L1

#### Basic specifications

Model	Motor(W)	Encoder	Speed		Stroke(mm)	Payload(Maximum)		Air flow rate (N ℓ /min)
			Lead(mm)	Speed(mm/s)		Horizontal(kg)	Vertical(kg)	
DRMC120-P	200	I A	L05	250	100~1100	80	35	30
DRMCP120-P			L10	500		60	20	30
			L20	1000		30	8	60

#### Options

Code	Description
L0	None sensor
L1	Limit sensor
L2	Origin sensor
L3	Photo sensor
K	K1 seal
R	Retainer seal
B	Brake
RS	Suction duct joint on opposition side

#### Allowable dynamic moment

Direction		Moment(N.m)	
Ma	X	60	Mr
	Y	60	Mr
Mb	X	49	My
	Z	65	Mr
Mc	Y	67	My
	Z	85	Mr

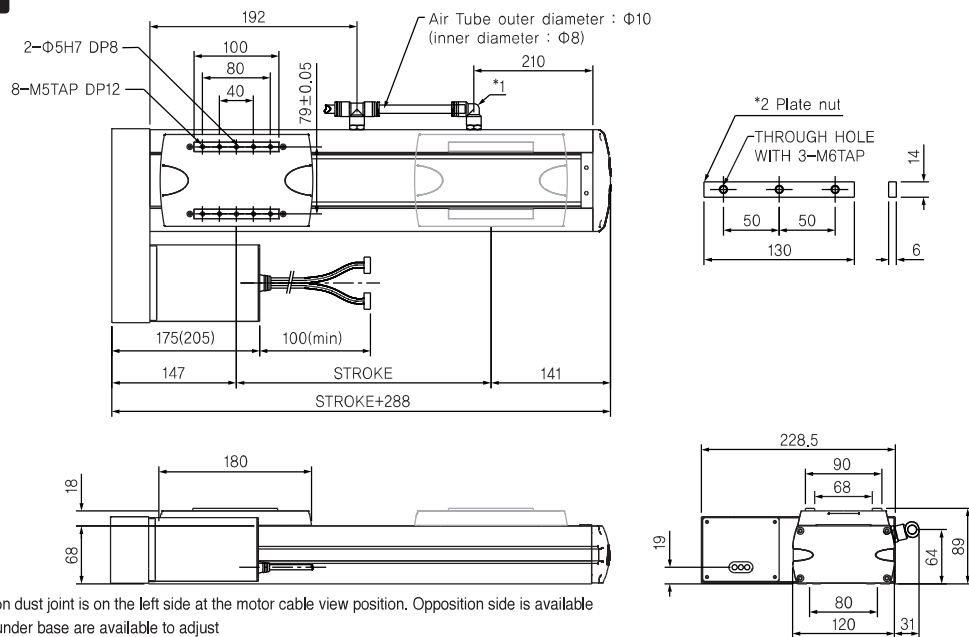
#### Common specifications

\* DRMP specifications are shown in [ ]

Positioning Repeatability	+/-0.02mm[+/-0.005mm]
Drive type	Ball screw, Φ15(Lead5, 10, 20mm)
Base material	Aluminum with Electro-deposition plating treatment
Cleanliness class(Note1)	Class 10
Cables length(Note2)	5m(standard), 7m, 10m(option)

\* According to options the price is changeable.

#### Dimension



\*1 Standard position of suction dust joint is on the left side at the motor cable view position. Opposition side is available

\*2 Mounting holes positions under base are available to adjust

#### Dimensions, Weight, Maximum Speed

	Stroke(mm)	100	200	300	400	500	600	700	800	900	1000	1100
	Weight(kg)(Note3)	6.4	7.1	7.8	8.5	9.2	9.9	10.6	11.3	12	12.7	13.4
	Maximum Speed(mm/s)	L05	250					-	-	-	-	-
		L10	500					490	380	310	250	210
		L20	1000					980	770	620	510	430

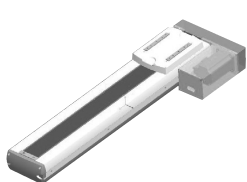
\* The above speed is based on the acceleration of 0.3G

#### Applicable controllers

Controller	Maximum number of controlled axes	Page
iM-Σ	8 axes	157
iMS-J	1 axis	151

#### Note

- (1) Per 1 cfm(0.1um based)
- (2) Maximum length is 30m. The performance of longer length than 15m is affected by the installation environment.
- (3) This is the weight of the model without brake motor  
The model equipped with a brake motor is 0.5kg heavier than this value

<b>DRMC140-P</b>	Ball screw, Clean Room specifications, Base width 140mm, In-Line type, 200W, 1~1000mm/s, Clean class 10							
<b>DRMCP140-P</b>	Ball screw, Clean Room specifications, Base width 140mm, In-Line type, 200W, 1~1000mm/s, Clean class 10, High precision							
Type : Side mount		Stroke : 100~1100mm		Payload : 80kg(Horizontal), 35kg(Vertical)				
Series	Base width	Type	Motor	Encoder	Speed	Stroke		Option
<b>DRMC</b>	<b>140</b>	<b>- LP -</b>	<b>200</b>	<b>- I -</b>	<b>L20</b>	<b>- 1100 -</b>		<b>L1</b>

#### Basic specifications

Model	Motor(W)	Encoder	Speed		Stroke(mm)	Payload(Maximum)		Air flow rate (N l /min)
			Lead(mm)	Speed(mm/s)		Horizontal(kg)	Vertical(kg)	
DRMC140-P	200	I A	L05	250	100~1100	80	35	40
DRMCP140-P			L10	500		60	20	40
			L20	1000		30	8	70

#### Options

Code	Description
L0	None sensor
L1	Limit sensor
L2	Origin sensor
L3	Photo sensor
K	K1 seal
R	Retainer seal
B	Brake
RS	Suction duct joint on opposition side

\* According to options the price is changeable.

#### Allowable dynamic moment

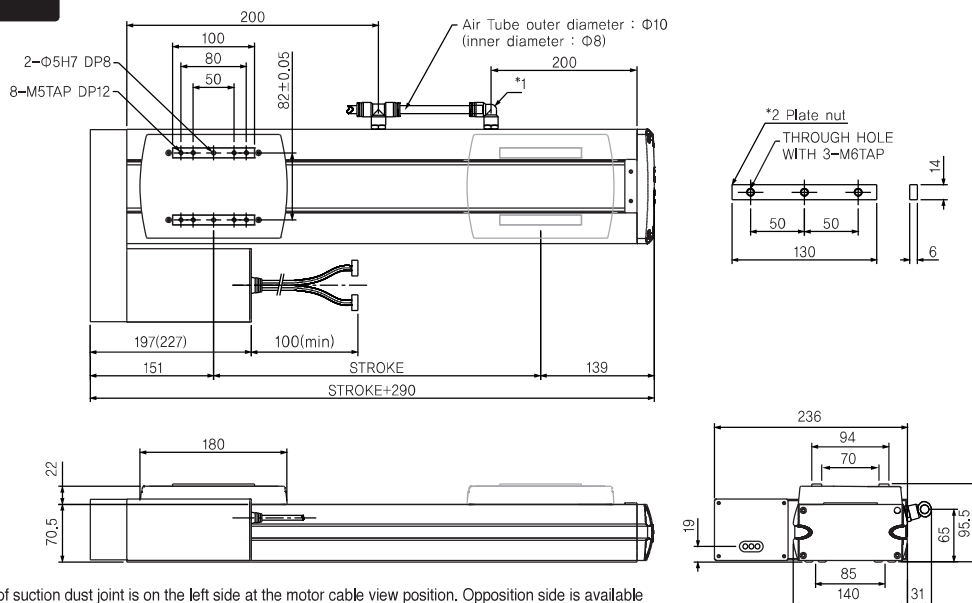
Direction	Moment(N.m)	
Ma	x	100 Mp
	y	136 Mr
Mb	x	112 My
	z	143 Mr
Mc	y	101 My
	z	122 Mp

#### Common specifications

\* DRMP specifications are shown in [ ]

Positioning Repeatability	+/-0.02mm[+/-0.005mm]
Drive type	Ball screw, Φ15(Lead5, 10, 20mm)
Base material	Aluminum with Electro-deposition plating treatment
Cleanliness class(Note1)	Class 10
Cables length(Note2)	5m(standard), 7m, 10m(option)

#### Dimension



\*1 Standard position of suction dust joint is on the left side at the motor cable view position. Opposition side is available

\*2 Mounting holes positions under base are available to adjust

#### Dimensions, Weight, Maximum Speed

	Stroke(mm)	100	200	300	400	500	600	700	800	900	1000	1100
	Weight(kg)(Note3)	7.6	8.6	9.6	10.6	11.6	12.6	13.6	14.6	15.6	16.6	17.6
Maximum Speed(mm/s)	L05	250						-	-	-	-	-
	L10	500						490	390	310	260	210
	L20	1000						990	780	630	520	430

\* The above speed is based on the acceleration of 0.3G

#### Applicable controllers

Controller	Maximum number of controlled axes	Page
iM-Σ	8 axes	157
iMS-J	1 axis	151

#### Note

- (1) Per 1 cfm(0.1um based)
- (2) Maximum length is 30m. The performance of longer length than 15m is affected by the installation environment.
- (3) This is the weight of the model without brake motor  
The model equipped with a brake motor is 0.5kg heavier than this value

## DRMC180-P

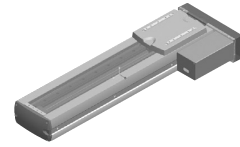
Ball screw, Clean Room specifications, Base width 180mm, In-Line type, 400W/600W, 1~1000mm/s, Clean class 10

## DRMCP180-P

Ball screw, Clean Room specifications, Base width 180mm, In-Line type, 400W/600W, 1~1000mm/s, Clean class 10, High precision

Type : Side mount Stroke : 100~1500mm Payload : 120kg(Horizontal), 45kg(Vertical) / 120kg(Horizontal), 40kg(Vertical)

Series Base width Type Motor Encoder Speed Stroke Option  
**DRMC 180 - LP - 600 - I - L20 - 1500 - L1**



### Basic specifications

Model	Motor(W)	Encoder	Speed		Stroke(mm)	Payload(Maximum)		Air flow rate (N ℓ /min)
			Lead(mm)	Speed(mm/s)		Horizontal(kg)	Vertical(kg)	
DRMC180-P DRMCP180-P	400	I A	L05	250	100~600	120	45	70
			L10	500	100~1500	100	35	70
			L20	1000		60	15	140
	600		L10	500		120	40	70
			L20	1000		100	20	140

### Options

Code	Description
L0	None sensor
L1	Limit sensor
L2	Origin sensor
L3	Photo sensor
K	K1 seal
R	Retainer seal
B	Brake
RS	Suction duct joint on opposition side

\* According to options the price is changeable.

### Allowable dynamic moment

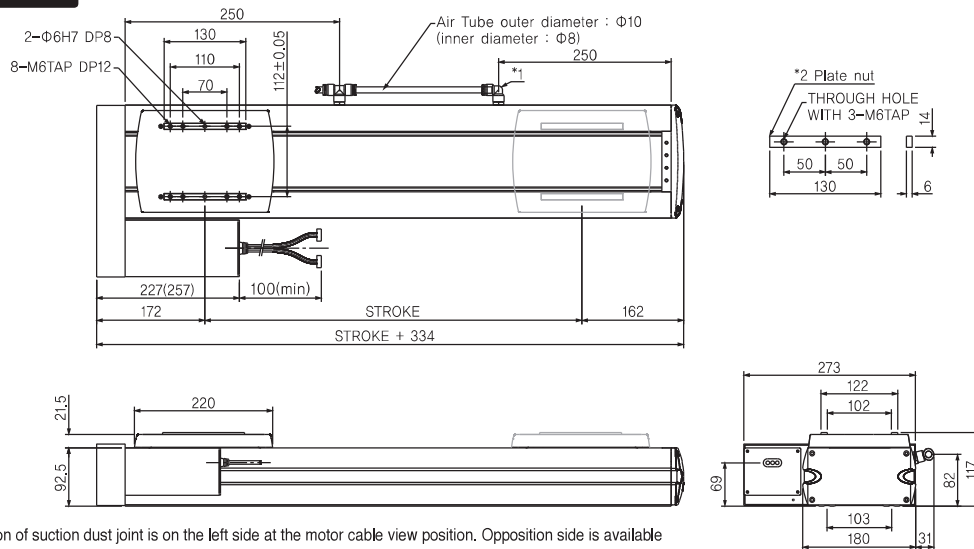
Direction	Moment(N.m)
Ma	X 165 Mp
	Y 232 Mr
Mb	X 190 My
	Z 246 Mr
Mc	Y 174 My
	Z 209 Mp

### Common specifications

\* DRMP specifications are shown in [ ]

Positioning Repeatability	+/-0.02mm[+/-0.005mm]
Drive type	Ball screw, Φ15(Lead5,10,20mm), Φ20(Lead10, 20mm)
Base material	Aluminum with Electro-deposition plating treatment
Cleanliness class(Note1)	Class 10
Cables length(Note2)	5m(standard), 7m, 10m(option)

### Dimension



\*1 Standard position of suction dust joint is on the left side at the motor cable view position. Opposition side is available

\*2 Mounting holes positions under base are available to adjust

### Dimensions, Weight, Maximum Speed

	Stroke(mm)	100	200	300	400	500	600	700	800	900	1000	1100	1200	1300	1400	1500
	Weight(kg)(Note3)	13.2	14.8	16.4	18	19.6	21.2	22.8	24.4	26	27.6	29.2	30.8	32.4	34.0	35.6
Maximum Speed(mm/s)	L05				250			-	-	-	-	-	-	-	-	-
	L10				500			470	370	300	250	210	255	220	191	168
	L20				1000			950	750	610	500	420	509	439	383	337

\* The above speed is based on the acceleration of 0.3G

### Applicable controllers

Controller	Maximum number of controlled axes	Page
iM-Σ	8 axes	157
iMS-J	1 axis	151

### Note

- (1) Per 1 cfm(0.1um based)
- (2) Maximum length is 30m. The performance of longer length than 15m is affected by the installation environment.
- (3) This is the weight of the model without brake motor  
The model equipped with a brake motor is 0.5kg heavier than this value
- (4) and (5) The stroke and lead of ball screw are related. The maximum stroke of the ball screw of Φ15, lead 10, 20mm is 1100mm and the ball screw of Φ20, lead 10, 20mm is 1500mm

## DRMC88-B

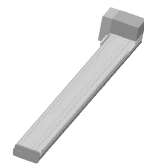
Belt, Clean room specifications, Base width 88mm,  
400W, 1~800mm/s

Type : Belt

Stroke : 1000~3000mm

Payload : 20kg(Horizontal)

Series	Base width	Type	Motor	Encoder	Speed	Stroke	Option
DRMC	88	- B	- 400	- I	- 800	- 2500	- L1



### Basic specifications

Model	Motor(W)	Encoder	Maximum Speed(mm/s)	Maximum Stroke(mm)	Payload(Maximum)	
					Horizontal(kg)	Vertical(kg)
DRMC88-B	400	I A	800	3000	20	-

### Options

Code	Description
L0	None sensor
L1	Limit sensor
L2	Origin sensor
L3	Photo sensor
K	K1 seal
R	Retainer seal
RS	Suction duct joint on opposition side

\* According to options the price is changeable.

### Allowable dynamic moment

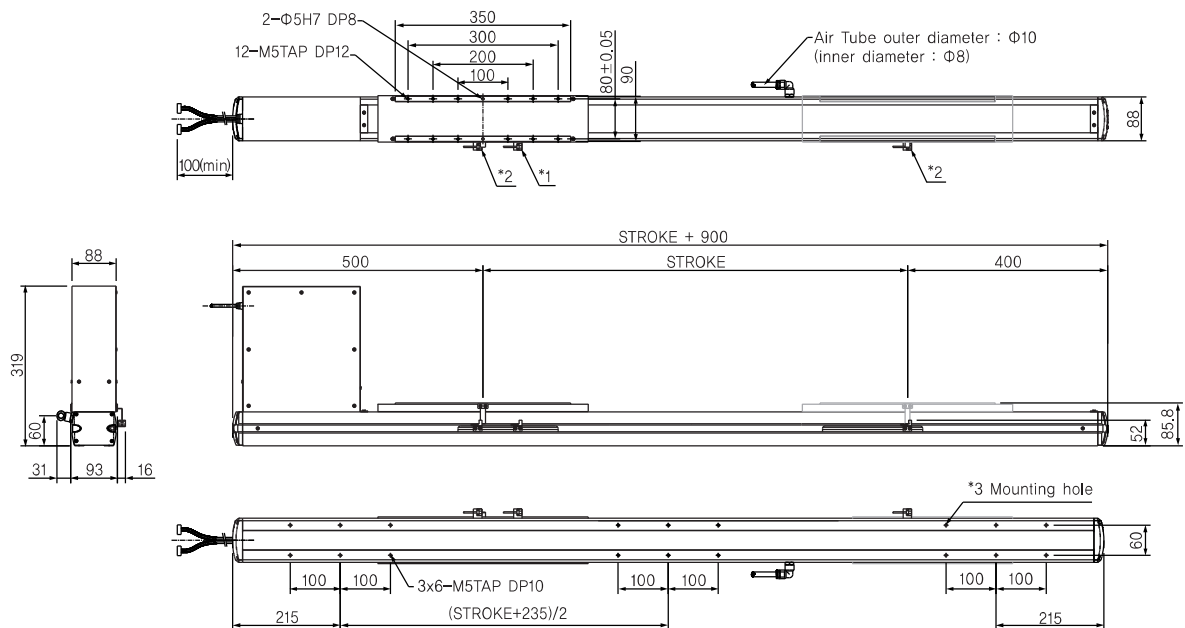
Direction	Moment(N.m)	
Ma	x	6.7 Mp
	y	10.5 Mr
Mb	x	9.4 My
	z	31.6 Mr
Mc	y	- My
	z	- Mp

### Common specifications

Positioning Repeatability	+/-0.1mm
Drive type	*Belt
Base material	Aluminum with Electro-deposition plating treatment
Cables length(Note1)	5m(standard), 7m, 10m(option)

\* The move distance of belt per revolution of motor is 16.00mm

### Dimension



\*1 Photo sensor for the origin return

\*2 Photo sensor for home limit and end limit

\*3 Mounting holes positions under the base are available to adjust

### Dimensions, Weight, Maximum Speed

Stroke(mm)	1000~2000	2100	2200	2300	2400	2500	2600	2700	2800	2900	3000
Weight(kg)	32.0~38.8	39.5	40.2	40.9	41.5	42.2	42.9	43.6	44.3	45.0	45.6
Maximum Speed(mm/s)	800										

\* The above speed is based on the acceleration of 0.3G

### Applicable controllers

Controller	Maximum number of controlled axes	Page
iM-Σ	8 axes	157
iMS-J	1 axis	151

### Note

- (1) Maximum length is 30m. The performance of longer length than 15m is affected by the installation environment.
- (2) Standard cleanliness is class 100(0.1um based). Desired higher cleanliness is required to be discussed with DASA in advance

DRM series

DRMC series

DLM series

DTR series

DSM series

iMS-J series

iM-Σ series

ACCESSORIES

RV series

# DRMC100-B

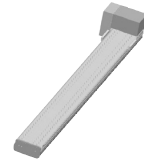
Belt, Clean room specifications, Base width 100mm,  
400W/800W, 1~2000mm/s

Type : Belt

Stroke : 1000~5000mm

Payload : 35kg(Horizontal)

Series	Base width	Type	Motor	Encoder	Speed	Stroke	Option
DRMC	100	- B	- 400	- I	- 2000	- 2500	- L1



## Basic specifications

Model	Motor(W)	Encoder	Maximum Speed(mm/s)	Maximum Stroke(mm)	Payload(Maximum)	
					Horizontal(kg)	Vertical(kg)
DRMC100-B	400	I	1000	5000	35	-
	800	A	2000			

## Options

Code	Description
L0	None sensor
L1	Limit sensor
L2	Origin sensor
L3	Photo sensor
K	K1 seal
R	Retainer seal
RS	Suction duct joint on opposition side

## Allowable dynamic moment

Direction	Moment(N.m)
Ma	X 19.5 Mp
	Y 27.8 Mr
Mb	X 36.4 My
	Z 83.3 Mr
Mc	Y - My
	Z - Mp

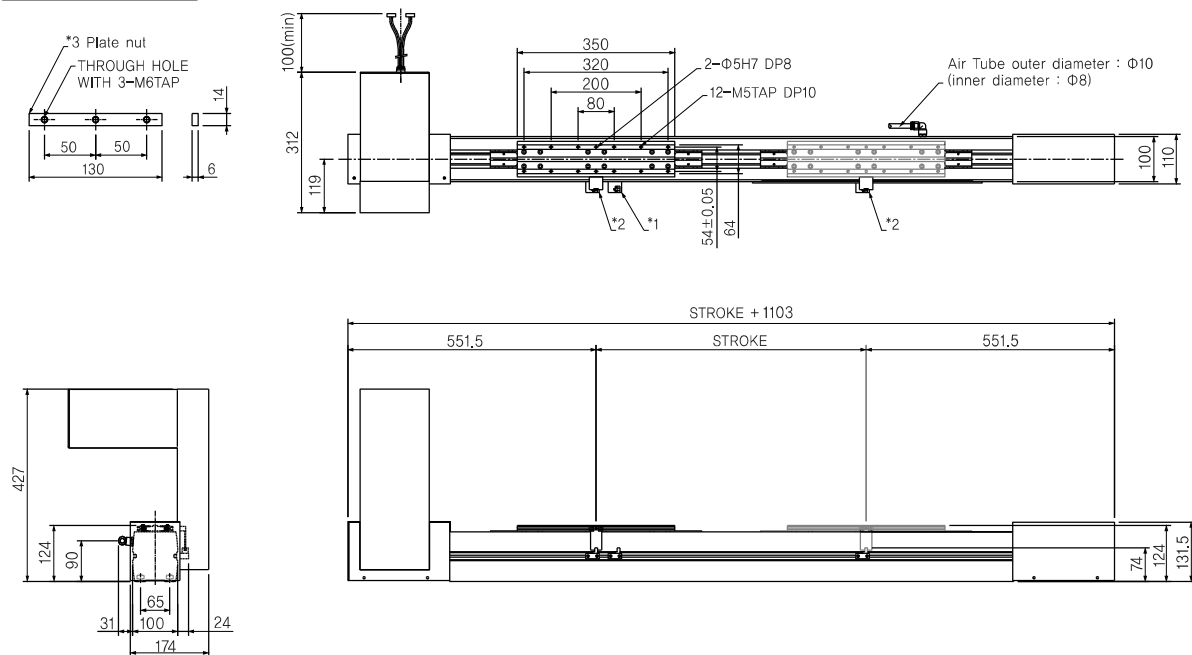
## Common specifications

Positioning Repeatability	+/-0.1mm
Drive type	*Belt
Base material	Aluminum with Electro-deposition plating treatment
Cables length(Note1)	5m(standard), 7m, 10m(option)

\* The move distance of belt per revolution of motor is 22.00mm

\* According to options the price is changeable.

## Dimension



\*1 Photo sensor for the origin return

\*2 Photo sensor for home limit and end limit

\*3 Mounting holes positions under the base are available to adjust

## Dimensions, Weight, Maximum Speed

Stroke(mm)	1000~2000	2100	2200	2300	2400	2500	2600	2700	2800	2900	3000
Weight(kg)	33.7~41.0	41.7	42.5	43.2	43.9	44.7	45.4	46.1	46.8	47.6	48.3
Maximum Speed(mm/s)	2000										

\* The above speed is based on the acceleration of 0.3G

## Applicable controllers

Controller	Maximum number of controlled axes	Page
iM-Σ	8 axes	157
iMS-J	1 axis	151

## Note

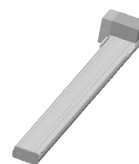
- (1) Maximum length is 30m. The performance of longer length than 15m is affected by the installation environment.
- (2) Standard cleanliness is class 100(0.1μm based). Desired higher cleanliness is required to be discussed with DASA in advance

Belt, Clean room specifications, Base width 120mm, 800W, 1~1000mm/s

Stroke : 1000~5000mm

**Payload :** 40kg(Horizontal)

Series	Base width	Type	Motor	Encoder	Speed	Stroke	Option
DRMC	120	- B -	800	- I -	1000	2500	- L1



Model	Motor(W)	Encoder	Maximum Speed(mm/s)	Maximum Stroke(mm)	Payload(Maximum)	
					Horizontal(kg)	Vertical(kg)
DRMC120-B	800	I A	1000	5000	40	-

Code	Description
L0	None sensor
L1	Limit sensor
L2	Origin sensor
L3	Photo sensor
K	K1 seal
R	Retainer seal
RS	Suction duct joint on opposition side

Direction		Moment(N.m)	
Ma	X	29.1	Mp
	Y	41.3	Mr
Mb	X	54.8	My
	Z	123.9	Mr
Mc	Y	-	My
	Z	-	Mr

Positioning Repeatability	+/-0.1mm
Drive type	*Belt
Base material	Aluminum with Electro-deposition plating treatment
Cables length(Note1)	5m(standard), 7m, 10m(option)

\* The move distance of belt per revolution of motor is 26.00mm

\* According to options the price is changeable.

Technical drawing of the 100mm stroke model, showing front, side, and detail views with dimensions and labels.

**Top View (Front):**

- Overall width: 130
- Distance between holes: 50, 50
- Through hole with 3-M6TAP
- \*3 Plate nut
- Side view dimensions: 14, 6

**Side View:**

- Overall length: 134
- Stroke length: 120
- Stroke + 1315
- Dimensions: 657.5, 657.5
- Stroke dimension: STROKE

**Detail View (Top):**

- Overall length: 203.5
- Dimensions: 185, 120, 31, 18

**Detail View (Side):**

- Overall height: 330
- Dimensions: 136, 91

**Front View (Main):**

- Overall length: 547
- Dimensions: 340, 200, 100
- 2-ØH7 DP10
- 8-M6TAP DP15
- Air Tube outer diameter : Ø10 (inner diameter : Ø8)
- \*2, \*1, \*2
- 72±0.05, 84
- 100(min)
- 331.2
- 143.5

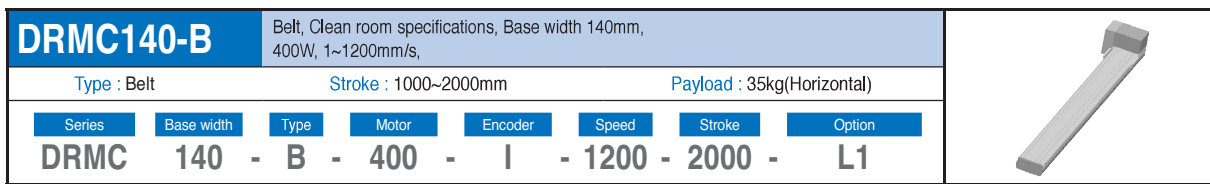
\*3 Mounting holes positions under the base are available to adjust

[illegible]

\* The above speed is based on the acceleration of 0.3G

Controller	Maximum number of controlled axes	Page
iM-Σ	8 axes	157
iMS-J	1 axis	151

- (1) Maximum length is 30m. The performance of longer length than 15m is affected by the installation environment.
- (2) Standard cleanliness is class 100(0.1um based). Desired higher cleanliness is required to be discussed with DASA in advance



Model	Motor(W)	Encoder	Maximum Speed(mm/s)	Maximum Stroke(mm)	Payload(Maximum)	
					Horizontal(kg)	Vertical(kg)
DRMC140-B	400	I A	1200	2000	35	-

Code	Description
L0	None sensor
L1	Limit sensor
L2	Origin sensor
L3	Photo sensor
K	K1 seal
R	Retainer seal
RS	Suction duct joint on opposition side

Direction		Moment(N.m)	
Ma	X	56.0	Mp
	Y	79.9	Mr
Mb	X	104.6	My
	Z	239.6	Mr
Mc	Y	-	My
	Z	-	Mp

Positioning Repeatability	+/-0.08mm
Drive type	*Belt
Base material	Aluminum with Electro-deposition plating treatment
Cables length <sup>(Note1)</sup>	5m(standard), 7m, 10m(option)

\*3 Plate nut

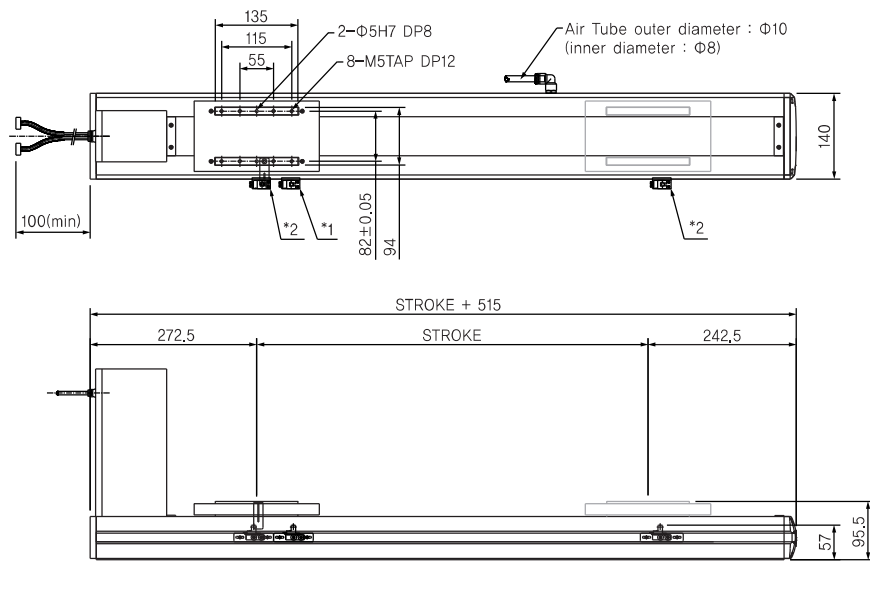
THROUGH HOLE WITH 3-M6TAP

14

6

50 50

130

[illegible]

Controller	Maximum number of controlled axes	Page
iM-Σ	8 axes	157
iMS-J	1 axis	151

- (1) Maximum length is 30m. The performance of longer length than 15m is affected by the installation environment.
- (2) Standard cleanliness is class 100(0.1um based). Desired higher cleanliness is required to be discussed with DASA in advance