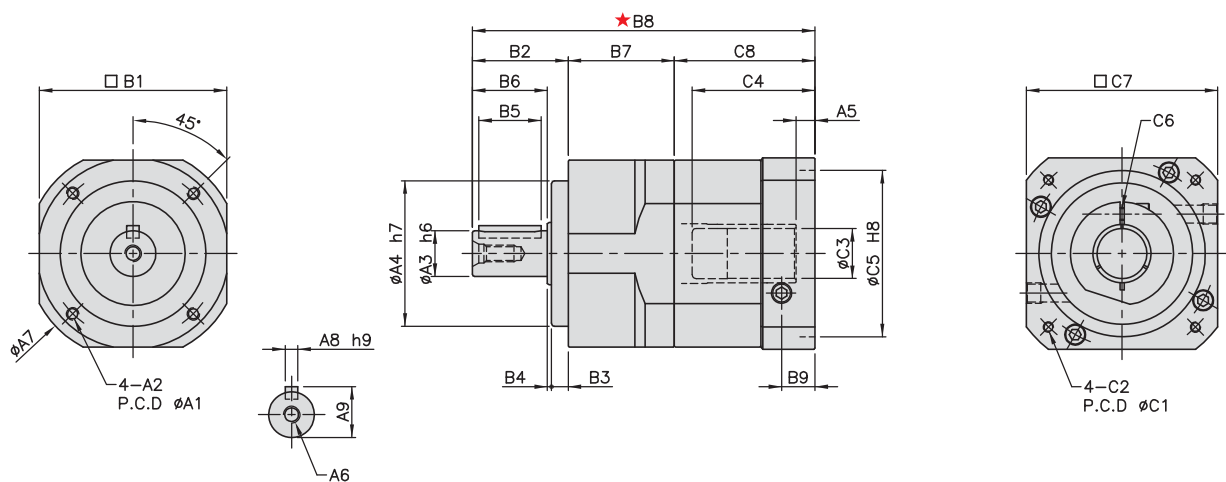




MODEL : KSE

Single Reduction

RATIO : 3.4.5.6.7.8.9.10



unit:mm

	Model code	44	62	90	120	142	180	220
		44	62	82	110	140	184	218
A	A1	44	62	82	110	140	184	218
	A2	M4×P0.7	M5×P0.8	M6×P1.0	M8×P1.25	M10×P1.5	M12×P1.75	M16×P2.0
	A3	13	16	22	32	40	55	75
	A4	35	50	70	90	120	160	180
	A5	5	6	9	10	10	11.35	12.5
	A6	M4×P0.7	M5×P0.8	M8×P1.25	M10×P1.5	M12×P1.75	M14×P2.0	M16×P2.0
	A7	50	70	102	134	166	215	252
	A8	5	5	6	10	12	16	20
	A9	15	18	24.5	35	43	59	79.5
B	B1	44	62	90	120	142	180	220
	B2	26	36	46	65	92	106	139
	B3	5	7	8	12	15	20	30
	B4	1	1	2	3	3	4	5
	B5	15	20	30	40	65	70	90
	B6	20	28	36	50	74	82	104
	B7	31.5	38	51	61	70	85	93
	B8	95	115, 123	164.5	205	260.5	323.5	367
	B9	9	11.5	16	19.5	20	23.5	23.5
C	C1	46, 60 63, 70	46, 70 75, 90	70, 90, 100 115, 145, 165	90, 100 115, 145, 165	145, 165 200, 215	200, 215 235, 265, 300	215, 235 265, 300
	C2	M4, M5	M4, M5, M6	M6, M8, M10	M6, M8, M10	M8, M12	M12, M16	M12, M16
	C3	5, 6.35 8, (11)	6.35, 8, 11 12, 14, (16, 19)	14, 16 19, (22, 24)	19, 22 24, 28, (32)	22, 24, 28 32, 35, (38)	38, 42, 48, 55	42, 48, 55
	C4	26	33.5, 41.5	59	67	84.5	114.5	117.5
	C5	30, 40, 50	50, 60, 70	50, 70, 80 95, 110, 130	70, 80 95, 110, 130	110, 114.3 130, 180	114.3, 180 200, 230	180, 200 230, 250
	C6	M3	M4, M5	M6	M8	M10	M10	M10
	C7	46, 55, 60	64, 70, 80	92, 110 130, 142	130, 150	146, 150 180, 190	182, 200 220, 250, 265	220, 250, 265
	C8	37.5	41, 49	67.5	79	98.5	132.5	135.5

High Precision Planetary Reducer

■ Mass Moments of Inertia (kg · cm²)

Ratio	44	62	90	120	142	180	220
3	0.03	0.16	0.61	3.25	9.21	28.98	69.61
4	0.03	0.14	0.48	2.74	7.54	23.67	54.37
5	0.03	0.13	0.47	2.71	7.42	23.29	53.27
6	0.03	0.13	0.45	2.65	7.25	22.75	51.72
7	0.03	0.13	0.45	2.62	7.14	22.48	50.97
8	0.03	0.13	0.44	2.58	7.07	22.59	50.84
9	0.03	0.13	0.44	2.57	7.04	22.53	50.63
10	0.03	0.13	0.44	2.57	7.03	22.51	50.56

Model No.	Unit	Ratio	44	62	90	120	142	180	220
Rated Output Torque	Nm	3	19	59	165	335	625	1206	2030
		4	16	51	146	300	555	1069	1804
		5	16	48	160	333	618	1189	2010
		6	15	45	151	311	583	1118	1911
		7	15	45	149	309	573	1108	1870
		8	14	43	143	298	553	1070	1824
		9	13	44	145	278	516	993	1694
		10	14	43	141	294	549	1059	1779
Max. Output Torque	Nm	3~10	3 Times of Rated Output Torque						
Rated Input Speed	rpm	3~10	5,000	5,000	4,000	4,000	3,000	3,000	2,000
Max. Input Speed	rpm	3~10	10,000	10,000	8,000	8,000	6,000	6,000	4,000
Backlash PS	arc min	3~10			≤1	≤1	≤1	≤1	≤1
Backlash P0	arc min	3~10	≤3	≤3	≤3	≤3	≤3	≤3	≤3
Backlash P1	arc min	3~10	≤5	≤5	≤5	≤5	≤5	≤5	≤5
Torsional Rigidity	Nm/arc min	3~10	3	6	14	27	60	140	240
Max. Radial Load	N	3~10	380	1,180	3,200	6,800	9,300	15,600	51,000
Max. Axial Load	N	3~10	190	590	1,600	3,400	4,650	7,800	25,500
Service Life	hr	3~10	10,000 (4,000 / Continuous Operation)						
Efficiency	%	3~10	≥97						
Operating Temperature	°C	3~10	-25°C ~ +90°C						
Lubrication		3~10	VIGO GREASE RE #0						
Degree of Gearbox Protection		3~10	IP65						
Mounting Position		3~10	Any						
Noise Level	dB	3~10	≤56	≤58	≤60	≤63	≤65	≤67	≤70
Weight ±3%	Kg	3~10	0.51	1.23	3.7	7.5	13.9	28.5	38.6

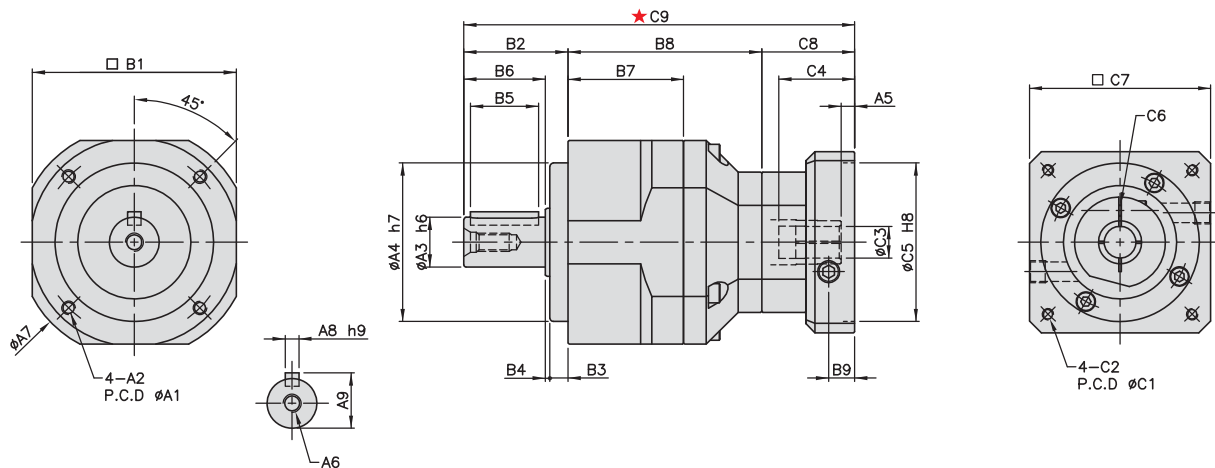
* 연속운전 사용시 본사와 상담후 선정바랍니다.



MODEL : KSE

Double Reduction

RATIO : 15, 20, 25, 30, 35, 40, 50, 60, 70, 80, 90, 100



unit:mm

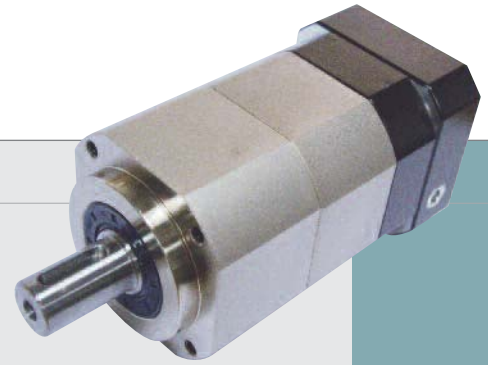
	Model	62	90	120	142	180	220
	code						
A	A1	62	82	110	140	184	218
	A2	M5×P0.8	M6×P1.0	M8×P1.25	M10×P1.5	M12×P1.75	M16×P2.0
	A3	16	22	32	40	55	75
	A4	50	70	90	120	160	180
	A5	5	6	9, 23.5	10, 20	10	11.5
	A6	M5×P0.8	M8×P1.25	M10×P1.5	M12×P1.75	M14×P2.0	M16×P2.0
	A7	70	102	134	166	215	252
	A8	5	6	10	12	16	20
	A9	18	24.5	35	43	59	79.5
B	B1	62	90	120	142	180	220
	B2	36	46	65	92	106	139
	B3	7	8	12	15	20	30
	B4	1	2	3	3	4	5
	B5	20	30	40	65	70	90
	B6	28	36	50	74	82	104
	B7	38	51	61	70	85	93
	B8	66	85.5	108.5	127.5	154	175
	B9	9	11.5	16	19.5	20	23.5
C	C1	46, 60, 63, 70	46, 70, 75, 90	70, 90, 100 115, 145, 165	90, 100 115, 145, 165	145, 165 200, 215	200, 215 235, 265, 300
	C2	M4, M5	M4, M5, M6	M6, M8, M10	M6, M8, M10	M8, M12	M12, M16
	C3	5, 6.35, 8, (11)	6.35, 8, 11 12, 14, (16, 19)	14, 16 19, (22, 24)	19, 22 24, 28, (32)	22, 24, 28 32, 35, (38)	38, 42, 48, 55
	C4	26	33.5, 41.5	59	67	84.5	114.5
	C5	30, 40, 50	50, 60, 70	50, 70, 80 95, 110, 130	70, 80 95, 110, 130	110, 114.3 130, 180	114.3, 180 200, 230
	C6	M3	M4, M5	M6	M8	M10	M10
	C7	46, 55, 60	64, 70, 80	92, 110 130, 142	130, 150	146, 150 180, 190	182, 200 220, 250, 265
	C8	37.5	41, 49	67.5, 82	79, 89	98.5	132.5
	C9	139.5	172.5, 180.5	241	298.5	358.5	446.5

High Precision Planetary Reducer

■ Mass Moments of Inertia (kg · cm²)

Ratio	62	90	120	142	180	220
15	0.03	0.14	0.46	2.63	7.3	22.79
20	0.03	0.14	0.46	2.63	7.3	22.79
25	0.03	0.14	0.46	2.63	7.1	22.79
30	0.03	0.14	0.46	2.43	7.1	22.59
35	0.03	0.14	0.44	2.43	7.1	22.59
40	0.03	0.14	0.44	2.43	6.92	22.59
50	0.03	0.14	0.44	2.43	6.92	22.59
60	0.03	0.14	0.43	2.39	6.72	21.83
70	0.03	0.14	0.43	2.39	6.72	21.83
80	0.03	0.14	0.43	2.39	6.72	21.83
90	0.03	0.14	0.40	2.39	6.72	21.60
100	0.03	0.14	0.40	2.39	6.72	21.60

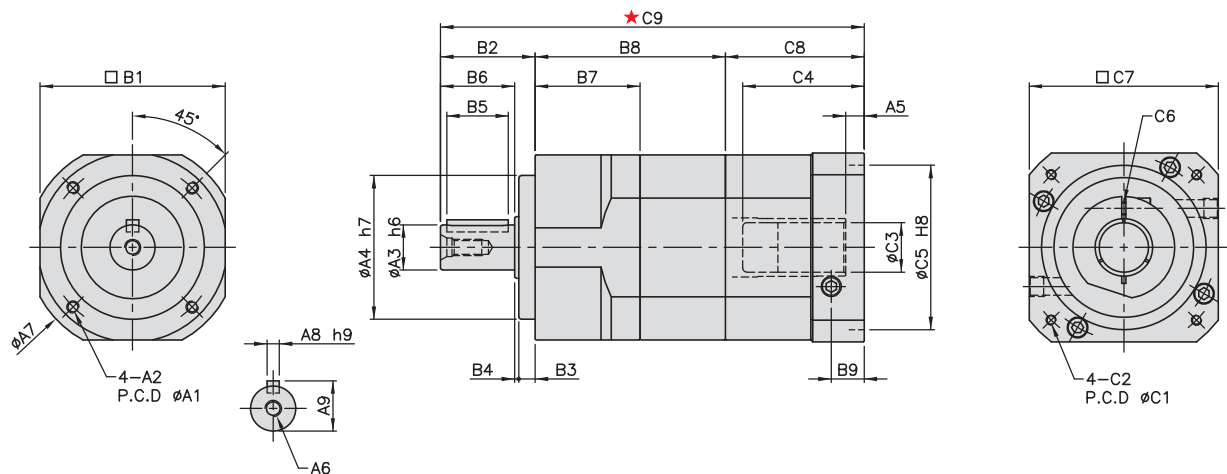
Model No.	Unit	Ratio	62	90	120	142	180	220
Rated Output Torque	Nm	15	59	165	335	625	1206	2030
		20	51	146	300	555	1069	1804
		25	48	160	333	618	1189	2010
		30	45	151	311	583	1118	1911
		35	45	149	309	573	1108	1870
		40	43	143	298	553	1070	1824
		50	48	160	333	618	1189	2010
		60	45	151	311	583	1118	1911
		70	45	149	309	573	1108	1870
		80	43	143	298	553	1070	1824
		90	44	145	278	516	993	1694
		100	43	141	294	549	1059	1779
Max. Output Torque	Nm	15~100	3 Times of Rated Output Torque					
Rated Input Speed	rpm	15~100	5,000	4,000	4,000	3,000	3,000	2,000
Max. Input Speed	rpm	15~100	10,000	8,000	8,000	6,000	6,000	4,000
Backlash P5	arc min	15~100			≤3	≤3	≤3	≤3
Backlash P0	arc min	15~100	≤5	≤5	≤5	≤5	≤5	≤5
Backlash P1	arc min	15~100	≤7	≤7	≤7	≤7	≤7	≤7
Torsional Rigidity	Nm arc min	15~100	6	14	27	60	140	240
Max. Radial Load	N	15~100	1,180	3,200	6,800	9,300	15,600	51,000
Max. Axial Load	N	15~100	590	1,600	3,400	4,650	7,800	25,500
Service Life	hr	15~100	10,000 (4,000 / Continuous Operation)					
Efficiency	%	15~100	≥94%					
Operating Temperature	°C	15~100	-25°C ~ +90°C					
Lubrication		15~100	VIGO GREASE RE #0					
Degree of Gearbox Protection		15~100	IP65					
Mounting Position		15~100	Any					
Noise Level	dB	15~100	≤58	≤60	≤63	≤65	≤67	≤70
Weight ±3%	Kg	15~100	1.62	4.3	8.8	19.5	38.1	53.6



MODEL : KSE-A

Double Reduction

RATIO : 15, 20, 25, 30, 35, 40, 50, 60, 70, 80, 90, 100



unit:mm

	Model code	44A	62A	90A	120A	142A	180A	220A
		A1	A2	A3	A4	A5	A6	A7
A	A1	44	62	82	110	140	184	218
	A2	M4×P0.7	M5×P0.8	M6×P1.0	M8×P1.25	M10×P1.5	M12×P1.75	M16×P2.0
	A3	13	16	22	32	40	55	75
	A4	35	50	70	90	120	160	180
	A5	5	6	9, 23.5	10, 20	10	11.5	12.5
	A6	M4×P0.7	M5×P0.8	M8×P1.25	M10×P1.5	M12×P1.75	M14×P2.0	M16×P2.0
	A7	50	70	102	134	166	215	252
	A8	5	5	6	10	12	16	20
	A9	15	18	24.5	35	43	59	79.5
B	B1	44	62	90	120	142	180	220
	B2	26	36	46	65	92	106	139
	B3	5	7	8	12	15	20	30
	B4	1	1	2	3	3	4	5
	B5	15	20	30	40	65	70	90
	B6	20	28	36	50	74	82	104
	B7	31.5	38	51	61	70	85	93
	B8	57.5	71.8	94.5	117	136.5	166	186
	B9	9	11.5	16, 30.5	19.5, 27.5	20	23.5	23.5
C	C1	46, 60, 63, 70	46, 70, 75, 90	70, 90, 100 115, 145, 165	90, 100 115, 145, 165	145, 165 200, 215	200, 215 235, 265, 300	215, 235 265, 300
	C2	M4, M5	M4, M5, M6	M6, M8, M10	M6, M8, M10	M8, M12	M12, M16	M12, M16
	C3	5, 6.35, 8, (11)	6.35, 8, 11 12, 14, (16, 19)	14, 16, 19 (22, 24)	19, 22, 24 28, (32)	22, 24, 28 32, 35, (38)	38, 42 48, 55	42, 48, 55
	C4	26	33.5, 41.5	59	67	84.5	114.5	117.5
	C5	30, 40, 50	50, 60, 70	50, 70, 80 95, 110, 130	70, 80 95, 110, 130	110, 114.3 130, 180	114.3, 180 200, 230	180, 200 230, 250
	C6	M3	M4	M6	M8	M10	M10	M10
	C7	46, 55, 60	64, 70, 80	92, 110 130, 142	130, 150	146, 150 180, 190	182, 200 220, 250, 265	220, 250, 265
	C8	37.5	41.49	67.5	79, 89	98.5	132.5	135.5
	C9	121	148.8, 156.8	208	261	327	404.5	460.5

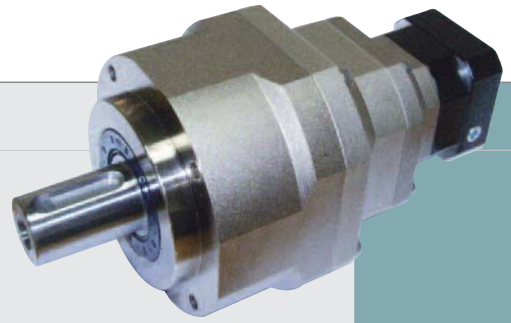
High Precision Planetary Reducer

■ Mass Moments of Inertia (kg · cm²)

Ratio	44A	62A	90A	120A	142A	180A	220A
15	0.03	0.03	0.14	0.46	2.63	7.3	22.79
20	0.03	0.03	0.14	0.46	2.63	7.3	22.79
25	0.03	0.03	0.14	0.46	2.63	7.1	22.79
30	0.03	0.03	0.14	0.46	2.43	7.1	22.59
35	0.03	0.03	0.14	0.44	2.43	7.1	22.59
40	0.03	0.03	0.14	0.44	2.43	6.92	22.59
50	0.03	0.03	0.14	0.44	2.43	6.92	22.59
60	0.03	0.03	0.14	0.43	2.39	6.72	21.83
70	0.03	0.03	0.14	0.43	2.39	6.72	21.83
80	0.03	0.03	0.14	0.43	2.39	6.72	21.83
90	0.03	0.03	0.14	0.40	2.39	6.72	21.60
100	0.03	0.03	0.14	0.40	2.39	6.72	21.60

Model No.	Unit	Ratio	44A	62A	90A	120A	142A	180A	220A
Rated Output Torque	Nm	15	19	59	165	335	625	1206	2030
		20	16	51	146	300	555	1069	1804
		25	16	48	160	333	618	1189	2010
		30	15	45	151	311	583	1118	1911
		35	15	45	149	309	573	1108	1870
		40	14	43	143	298	553	1070	1824
		50	16	48	160	333	618	1189	2010
		60	15	45	151	311	583	1118	1911
		70	15	45	149	309	573	1108	1870
		80	14	43	143	298	553	1070	1824
		90	13	44	145	278	516	993	1694
		100	14	43	141	294	549	1059	1779
Max. Output Torque	Nm	15~100	3 Times of Rated Output Torque						
Rated Input Speed	rpm	15~100	5,000	5,000	4,000	4,000	3,000	3,000	2,000
Max. Input Speed	rpm	15~100	10,000	10,000	8,000	8,000	6,000	6,000	4,000
Backlash PS	arc min	15~100	≤4	≤4	≤4	≤4	≤4	≤4	≤4
Backlash P0	arc min	15~100	≤8	≤8	≤8	≤8	≤8	≤8	≤8
Backlash P1	arc min	15~100	≤12	≤12	≤12	≤12	≤12	≤12	≤12
Torsional Rigidity	Nm/arc min	15~100	3	6	14	27	60	140	240
Max. Radial Load	N	15~100	380	1,180	3,200	6,800	9,300	15,600	51,000
Max. Axial Load	N	15~100	190	590	1,600	3,400	4,650	7,800	25,500
Service Life	hr	15~100	10,000 (4,000 / Continuous Operation)						
Efficiency	%	15~100	≥94%						
Operating Temperature	°C	15~100	-25°C ~ +90°C						
Lubrication		15~100	VIGO GREASE RE #0						
Degree of Gearbox Protection		15~100	IP65						
Mounting Position		15~100	Any						
Noise Level	dB	15~100	≤56	≤58	≤60	≤63	≤65	≤67	≤70
Weight ±3%	Kg	15~100	0.7	1.8	5.1	11.8	21.5	41.3	56.8

* 연속운전 사용시 본사와 상담후 선정바랍니다.

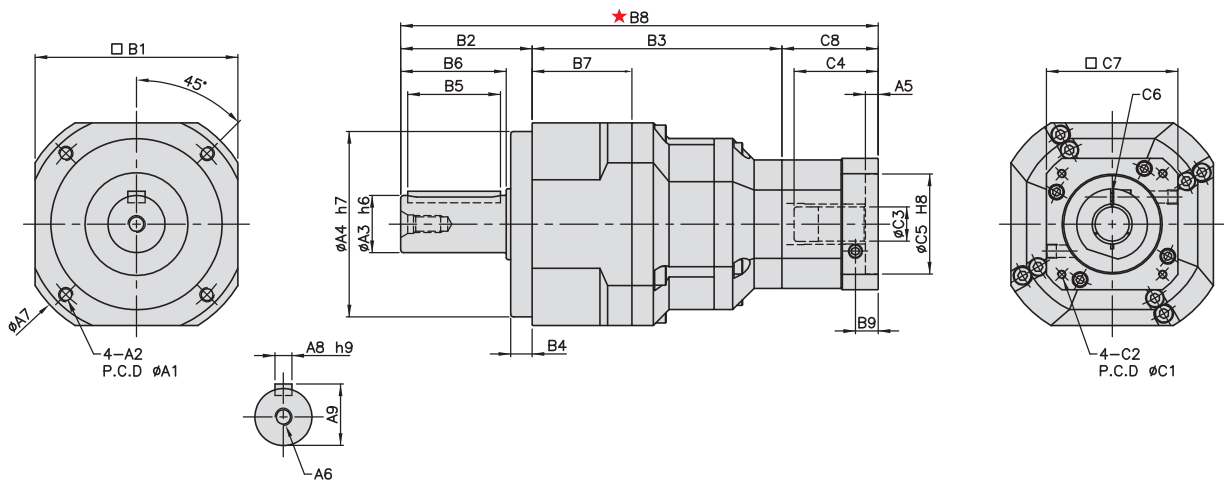


MODEL : KSE

Triple Reduction

RATIO : 125.150.175.200.250.300.350.

400.450.500.600.700.800.900.1000



unit:mm

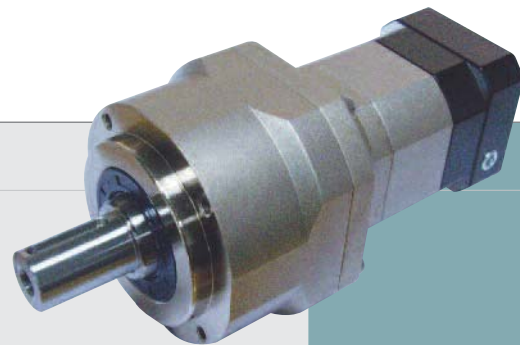
	Model	90	120	142	180	220
	code					
A	A1	82	110	140	184	218
	A2	M6×P1.0	M8×P1.25	M10×P1.5	M12×P1.75	M16×P2.0
	A3	22	32	40	55	75
	A4	70	90	120	160	180
	A5	5	6	9	10	10
	A6	M8×P1.25	M10×P1.5	M12×P1.75	M14×P2.0	M16×P2.0
	A7	102	134	166	215	252
	A8	6	10	12	16	20
	A9	24.5	35	43	59	79.5
B	B1	90	120	142	180	220
	B2	46	65	92	106	139
	B3	113.5	143	175	211.5	244
	B4	8	12	15	20	30
	B5	30	40	65	70	90
	B6	36	50	74	82	104
	B7	51	61	70	85	93
	B8	197	249, 257	334.5	396.5	481.5
	B9	9	11.5	16, 30.5	19.5, 27.5	20
C	C1	46, 60, 63, 70	46, 70, 75, 90	70, 90, 100 115, 145, 165	90, 100 115, 145, 165	145, 165 200, 215
	C2	M4, M5	M4, M5, M6	M6, M8, M10	M6, M8, M10	M8, M12
	C3	5, 6.35, 8, (11)	6.35, 8, 11 12, 14, (16, 19)	14, 16 19, (22, 24)	19, 22 24, 28, (32)	22, 24, 28 32, 35, (38)
	C4	26	33.5, 41.5	59	67	84.5
	C5	30, 40, 50	50, 60, 70	50, 70, 80 95, 110, 130	70, 80 95, 110, 130	110, 114.3 130, 180
	C6	M3	M4, M5	M6	M8	M10
	C7	46, 55, 60	64, 70, 80	92, 110 130, 142	130, 150	146, 150 180, 190
	C8	37.5	41, 49	67.5	79	98.5

High Precision Planetary Reducer

■ Mass Moments of Inertia (Kg · cm²)

Ratio	90	120	142	180	220
125	0.01	0.04	0.71	1.42	3.29
150	0.01	0.04	0.51	0.92	2.15
175	0.01	0.04	0.40	0.83	1.26
200	0.01	0.04	0.21	0.65	0.98
250	0.01	0.04	0.11	0.52	0.82
300	0.01	0.04	0.09	0.21	0.82
350	0.01	0.04	0.09	0.21	0.82
400	0.01	0.04	0.09	0.21	0.82
450	0.01	0.04	0.09	0.21	0.51
500	0.01	0.04	0.08	0.12	0.51
600	0.01	0.04	0.08	0.12	0.25
700	0.01	0.04	0.08	0.12	0.25
800	0.01	0.04	0.08	0.12	0.25
900	0.01	0.04	0.08	0.12	0.25
1000	0.01	0.04	0.08	0.12	0.25

Model No.	Unit	Ratio	90	120	142	180	220
Rated Output Torque	Nm	125	160	333	618	1189	2010
		150	165	335	625	1206	2030
		175	149	309	573	1108	1870
		200	146	300	555	1069	1804
		250	160	333	618	1189	2010
		300	151	311	583	1118	1911
		350	149	309	573	1108	1870
		400	143	298	553	1070	1824
		450	145	278	516	993	1694
		500	160	333	618	1189	2010
		600	151	311	583	1118	1911
		700	149	309	573	1108	1870
		800	143	298	553	1070	1824
		900	145	278	516	993	1694
		1000	141	294	549	1059	1779
Max. Output Torque	Nm	125~1000	3 Times of Rated Output Torque				
Rated Input Speed	rpm	125~1000	4,000	4,000	3,000	3,000	2,000
Max. Input Speed	rpm	125~1000	8,000	8,000	6,000	6,000	4,000
Backlash PS	arc min	125~1000		≤5	≤5	≤5	≤5
Backlash P0	arc min	125~1000	≤7	≤7	≤7	≤7	≤7
Backlash P1	arc min	125~1000	≤9	≤9	≤9	≤9	≤9
Torsional Rigidity	Nm/arc min	125~1000	14	27	60	140	240
Max. Radial Load	N	125~1000	3,200	6,800	9,300	15,600	51,000
Max. Axial Load	N	125~1000	1,600	3,400	4,650	7,800	25,500
Service Life	hr	125~1000	10,000 (4,000 / Continuous Operation)				
Efficiency	%	125~1000	≥90%				
Operating Temperature	°C	125~1000	-25°C ~ +90°C				
Lubrication		125~1000	VIGO GREASE RE #0				
Degree of Gearbox Protection		125~1000	IP65				
Mounting Position		125~1000	Any				
Noise Level	dB	125~1000	≤60	≤63	≤65	≤67	≤70
Weight ±3%	Kg	125~1000	5.2	12.4	24.5	49.3	78.1

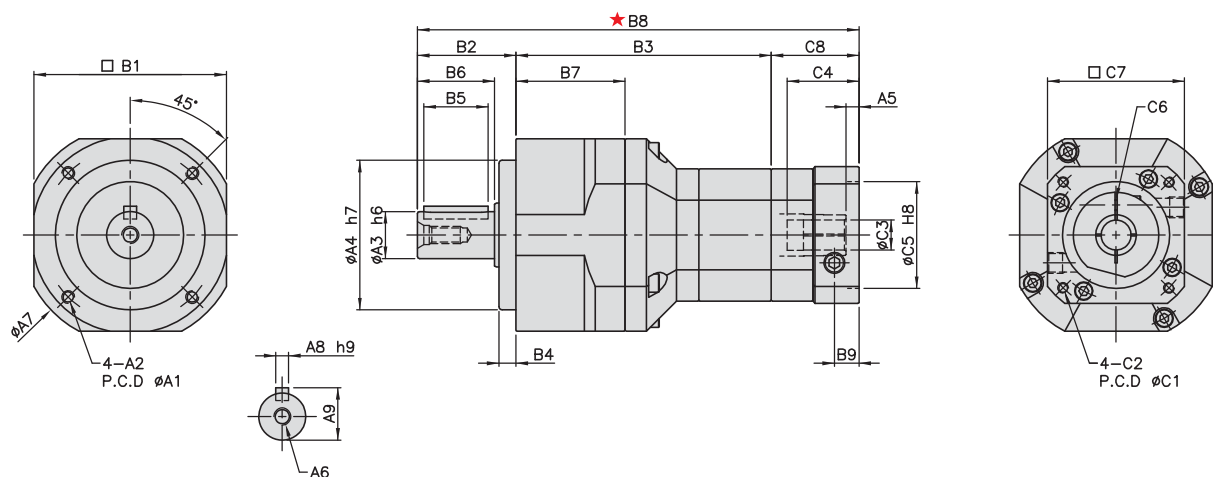


MODEL : KSE-A

Triple Reduction

RATIO : 125.150.175.200.250.300.350.

400.450.500.600.700.800.900.1000



unit:mm

	Model code	62A	90A	120A	142A	180A	220A
A	A1	62	82	110	140	184	218
	A2	M5×P0.8	M6×P1.0	M8×P1.25	M10×P1.5	M12×P1.75	M16×P2.0
	A3	16	22	32	40	55	75
	A4	50	70	90	120	160	180
	A5	5	6.5	9, 23.5	10, 20	10	11.5
	A6	M5×P0.8	M8×P1.25	M10×P1.5	M12×P1.75	M14×P2.0	M16×P2.0
	A7	70	102	134	166	215	252
	A8	5	6	10	12	16	20
	A9	18	24.5	35	43	59	79.5
B	B1	62	90	120	142	180	220
	B2	36	46	65	92	106	139
	B3	92	119.5	152	183.5	220.5	256
	B4	7	8	12	15	20	30
	B5	20	30	40	65	70	90
	B6	28	36	50	74	82	104
	B7	38	51	61	70	85	93
	B8	165.5	206.5, 214.5	284.5	354.5	425	527.5
	B9	9	11.5	16, 30.5	19.5	20	23.5
C	C1	46, 60, 63, 70	46, 70, 75, 90	70, 90, 100 115, 145, 165	90, 100 115, 145, 165	145, 165 200, 215	200, 215 235, 265, 300
	C2	M4, M5	M4, M5, M6	M6, M8, M10	M6, M8, M10	M8, M12	M12, M16
	C3	5, 6.35, 8, (11)	6.35, 8, 11 12, 14, (16, 19)	14, 16 19, (22, 24)	19, 22, 24, 28 (32), 32, 35, (38)	22, 24, 28	38, 42, 48, 55
	C4	26	33.5, 41.5	59	67	84.5	114.5
	C5	30, 40, 50	50, 60, 70	50, 70, 80 95, 110, 130	70, 80 95, 110, 130	110, 114.3 130, 180	114.3, 180 200, 230
	C6	M3	M4, M5	M6	M8	M10	M10
	C7	46, 55, 60	64, 70, 80	92, 110 130, 142	130, 150	146, 150 180, 190	182, 200 220, 250, 265
	C8	37.5	41, 49	67.5	79	98.5	132.5

High Precision Planetary Reducer

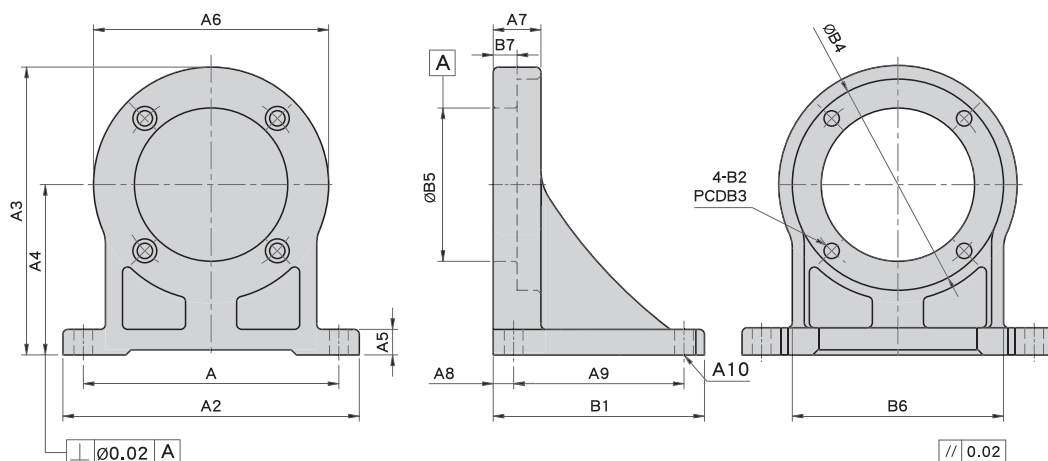
■ Mass Moments of Inertia (Kg · cm²)

Ratio	62 A	90A	120A	142A	180A	220A
125	0.01	0.01	0.04	0.71	1.42	3.29
150	0.01	0.01	0.04	0.51	0.92	2.15
175	0.01	0.01	0.04	0.40	0.83	1.26
200	0.01	0.01	0.04	0.21	0.65	0.98
250	0.01	0.01	0.04	0.11	0.52	0.82
300	0.01	0.01	0.04	0.09	0.21	0.82
350	0.01	0.01	0.04	0.09	0.21	0.82
400	0.01	0.01	0.04	0.09	0.21	0.82
450	0.01	0.01	0.04	0.09	0.21	0.51
500	0.01	0.01	0.04	0.08	0.12	0.51
600	0.01	0.01	0.04	0.08	0.12	0.25
700	0.01	0.01	0.04	0.08	0.12	0.25
800	0.01	0.01	0.04	0.08	0.12	0.25
900	0.01	0.01	0.04	0.08	0.12	0.25
1000	0.01	0.01	0.04	0.08	0.12	0.25

Model No.	Unit	Ratio	62A	90A	120A	142A	180A	220A
Rated Output Torque	Nm	125	48	160	333	618	1189	2010
		150	59	165	335	625	1206	2030
		175	45	149	309	573	1108	1870
		200	51	146	300	555	1069	1804
		250	48	160	333	618	1189	2010
		300	45	151	311	583	1118	1911
		350	45	149	309	573	1108	1870
		400	43	143	298	553	1070	1824
		450	44	145	278	516	993	1694
		500	48	160	333	618	1189	2010
		600	45	151	311	583	1118	1911
		700	45	149	309	573	1108	1870
		800	43	143	298	553	1070	1824
		900	44	145	278	516	993	1694
		1000	43	141	294	549	1059	1779
Max. Output Torque	Nm	125~1000	3 Times of Rated Output Torque					
Rated Input Speed	rpm	125~1000	5,000	4,000	4,000	3,000	3,000	2,000
Max. Input Speed	rpm	125~1000	10,000	8,000	8,000	6,000	6,000	4,000
Backlash PS	arc min	125~1000			≤5	≤5	≤5	≤5
Backlash P0	arc min	125~1000	≤7	≤7	≤7	≤7	≤7	≤7
Backlash P1	arc min	125~1000	≤9	≤9	≤9	≤9	≤9	≤9
Torsional Rigidity	Nm/arc min	125~1000	6	14	27	60	140	240
Max. Radial Load	N	125~1000	1,180	3,200	6,800	9,300	15,600	51,000
Max. Axial Load	N	125~1000	590	1,600	3,400	4,650	7,800	25,500
Service Life	hr	125~1000	10,000 (4,000 / Continuous Operation)					
Efficiency	%	125~1000	≥90%					
Operating Temperature	°C	125~1000	-25°C ~ +90°C					
Lubrication		125~1000	VIGO GREASE RE #0					
Degree of Gearbox Protection		125~1000	IP65					
Mounting Position		125~1000	Any					
Noise Level	dB	125~1000	≤58	≤60	≤63	≤65	≤67	≤70
Weight ±3%	Kg	125~1000	1.91	5.3	12.5	25	51.5	81.2

ACCESSORIES

Foot Type Base Kits



unit:mm

	Model Code	44	62	90	120	142	180	220
A	A1	70	90	110	150	190	240	280
	A2	88	108	130	176	220	276	330
	A3	75.5	95.5	127	170	207.5	274	334
	A4	45	55	75	100	120	160	200
	A5	8	9	11	16	19	24	30
	A6	60	81	104	140	175	228	268
	A7	13	16	21	28	35	45	60
	A8	10	10	11	14	16	19	26
	A9	40	50	75	100	120	160	200
	A10	4-Ø7	4-Ø7	4-Ø9	4-Ø11	4-Ø13	4-Ø17	4-Ø21
B	B1	60	70	97	128	152	198	252
	B2	Ø4.5	Ø5.5	Ø6.8	Ø9	Ø11	Ø13	Ø17
	B3	44	62	82	110	140	184	218
	B4	50	70	92	124	155	205	242
	B5	35	50	70	90	120	160	180
	B6	50	70	90	125	156	200	230
	B7	6	8	9	14	16	21	30
	Kg		0.71	1.57	3.86	6.41	13.44	27.73